

Barudan

HIGH SPEED AUTOMATIC EMBROIDERY MACHINE

MODEL **BENYH-YN**
BENBH-YN

PARTS LIST

BARUDAN CO., LTD.

ADDRESS 906 JOSUJI
ICHINOMIYA-CITY· AICHI-PREF·
JAPAN

TEL. <0586>76-1137

FAX. <0586>77-1499

TELEX 4573268 BARUNA J

CABLE BARUNA ICHINOMIYA

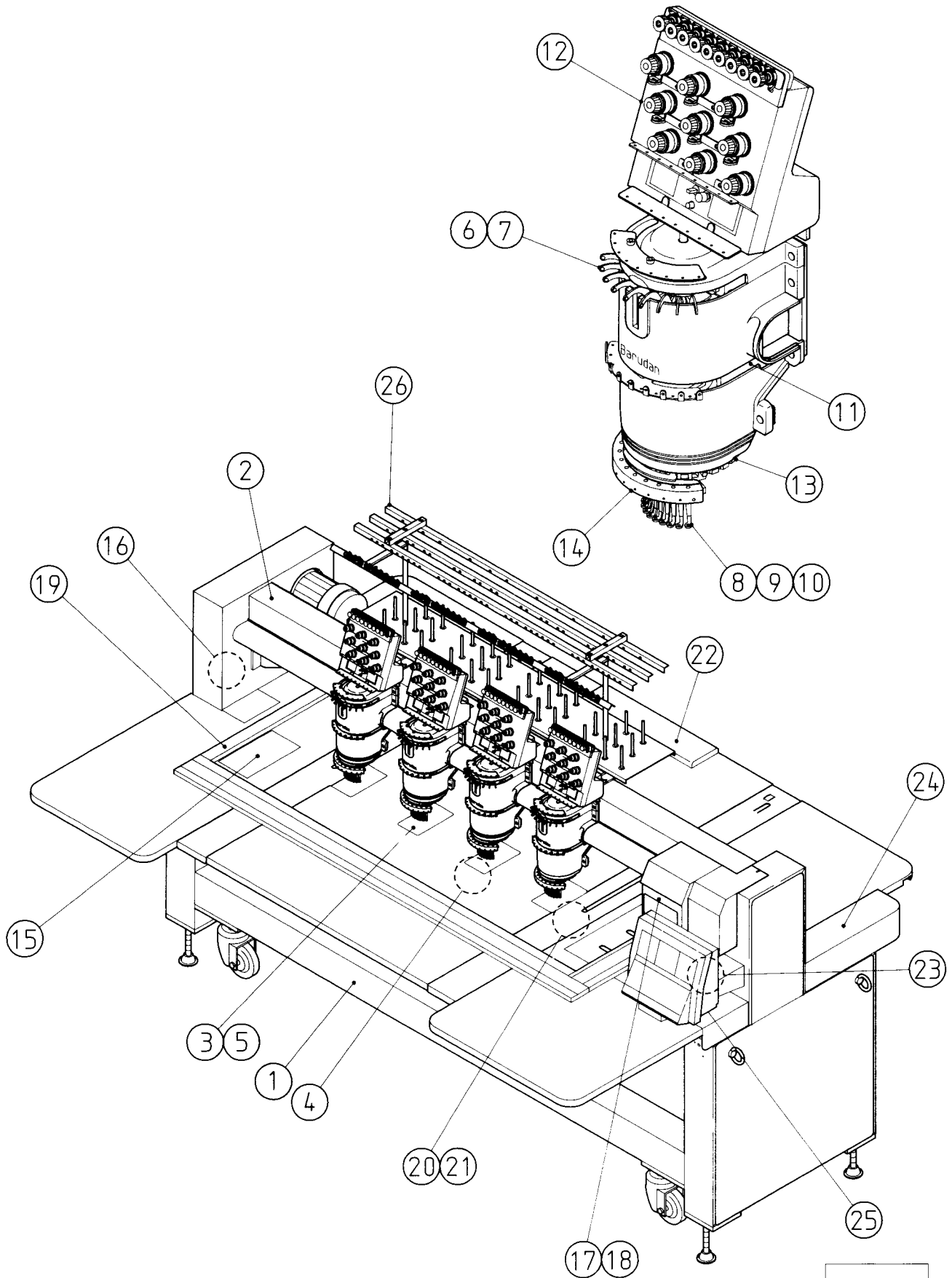
BENYH-YN
BENBH-YN

HIGH SPEED AUTOMATIC EMBROIDERY

MACHINE PARTS LIST

CONTENTS

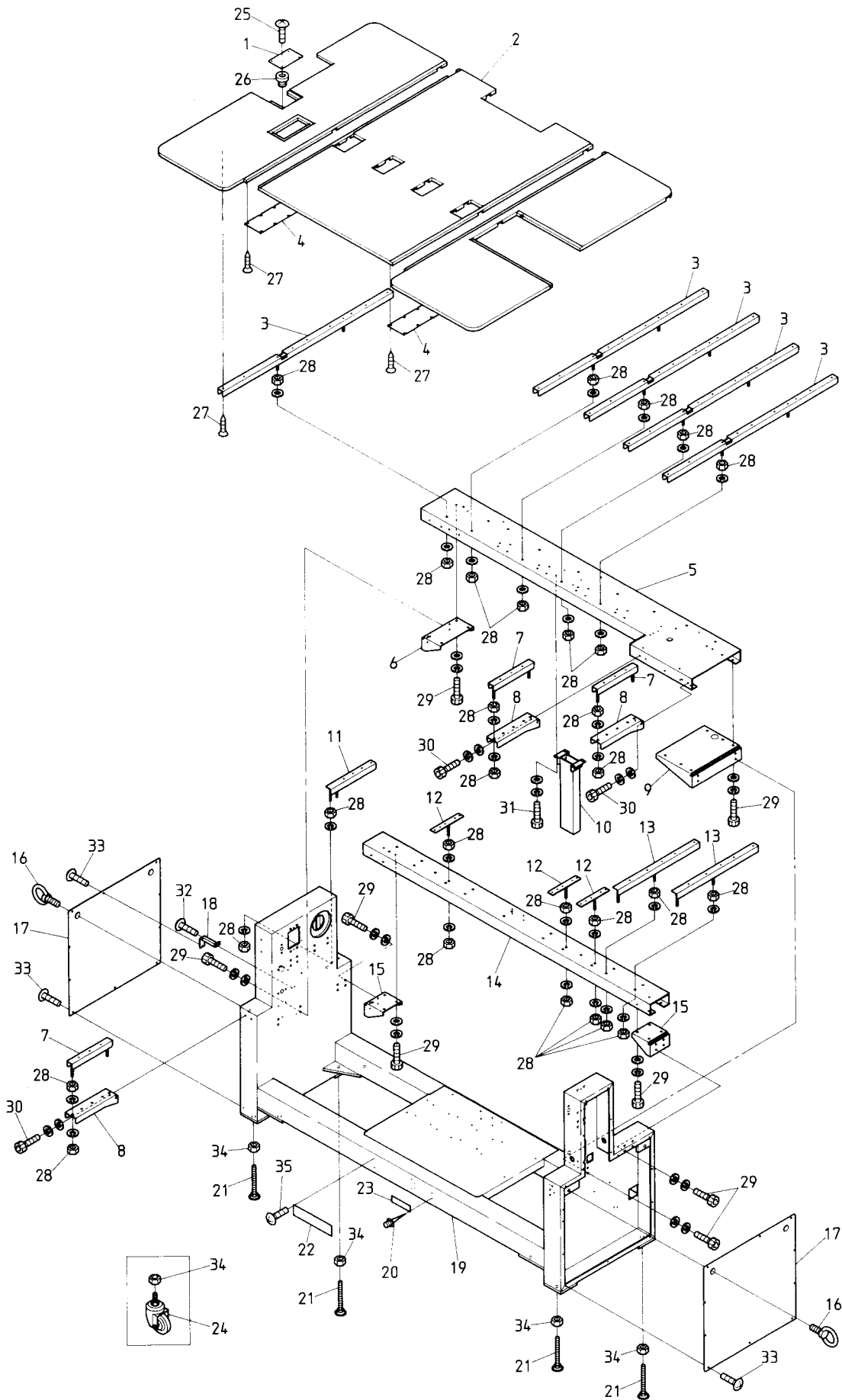
ITEM No.	Page No.
Machine layout (BENYH-YN/BENBH-YN)	1
① Table • Frame	2
② Bridge	4
③ Bed a' ssy	6
④ Thread cutting mechanism I (Thread cutting section)	8
⑤ Encoder a' ssy	1 0
⑥ Take up lever a' ssy I	1 2
⑦ Take up lever a' ssy II	1 4
⑧ Needle bar mechanism I	1 6
⑨ Needle bar mechanism II	1 8
⑩ Needle bar mechanism III	2 0
⑪ Jump a' ssy	2 2
⑫ Thread guide mechanism	2 4
⑬ Thread cutting mechanism II (Thread away section)	2 6
⑭ Thread cutting mechanism III (Thread support section)	2 8
⑮ Thread cutting mechanism IV (Thread cutting drive section)	3 0
⑯ Drive mechanism	3 2
⑰ Color change mechanism I	3 4
⑱ Color change mechanism II	3 6
⑲ Pantograph drive mechanism I (Pantograph•Guide cover)	3 8
⑳ Pantograph drive mechanism II (H-Direction•Front)	4 0
㉑ Pantograph drive mechanism III (H-Direction•Rear)	4 2
㉒ Pantograph drive mechanism IV (H-Direction•Drive)	4 4
㉓ Pantograph drive mechanism V (V-Direction•Guide rail base relation)	4 6
㉔ Pantograph drive mechanism VI (V-Direction•Drive)	4 8
㉕ Control system (NYH Type)	5 0
㉖ Control system (NBH Type)	5 2
㉗ Option	5 4
㉘ Thread guide mechanism (Lower thread sensorium)	5 6
INDEX	5 8



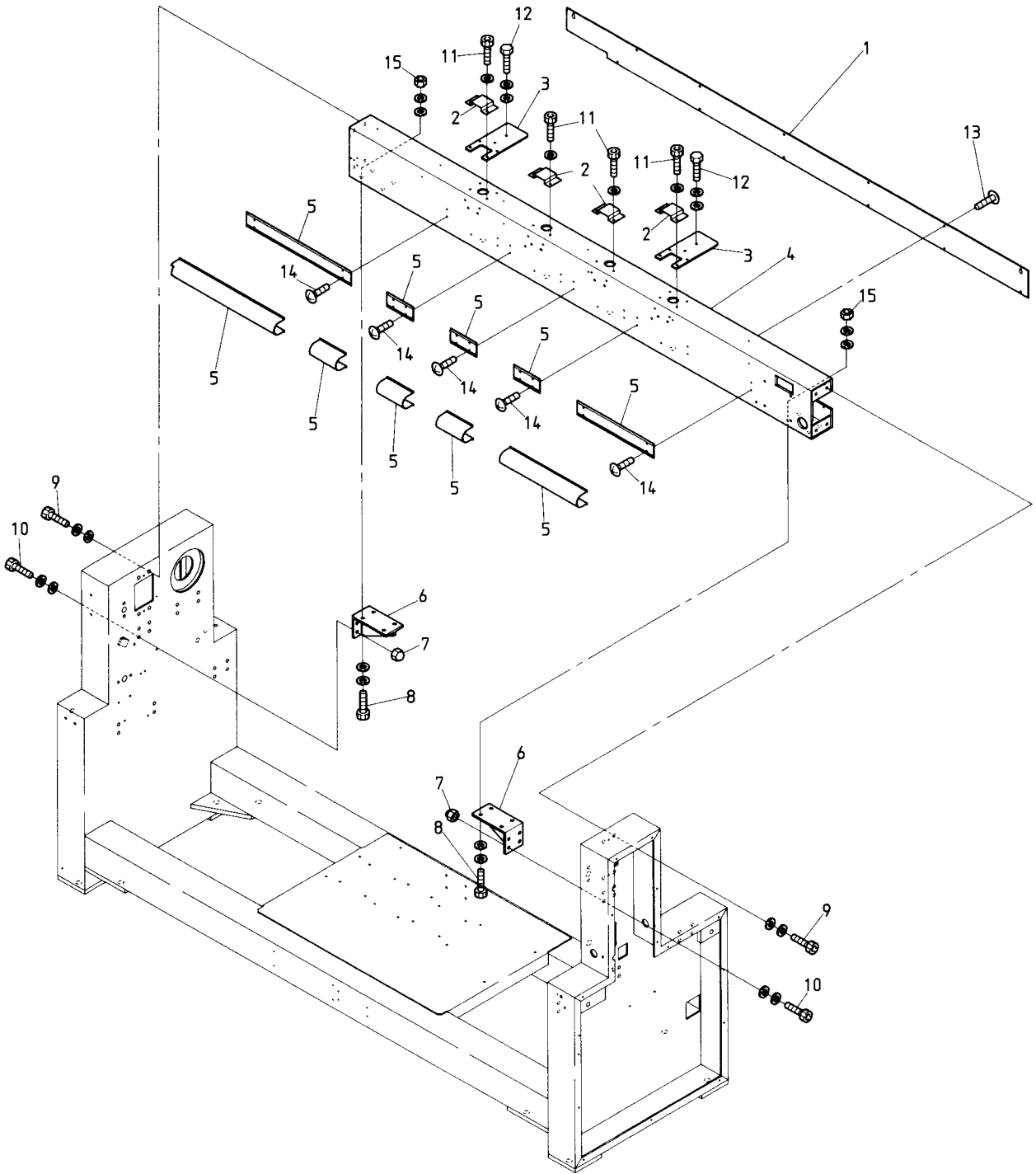
From the library of: Diamond Needle Corp

BENYH
BENBH

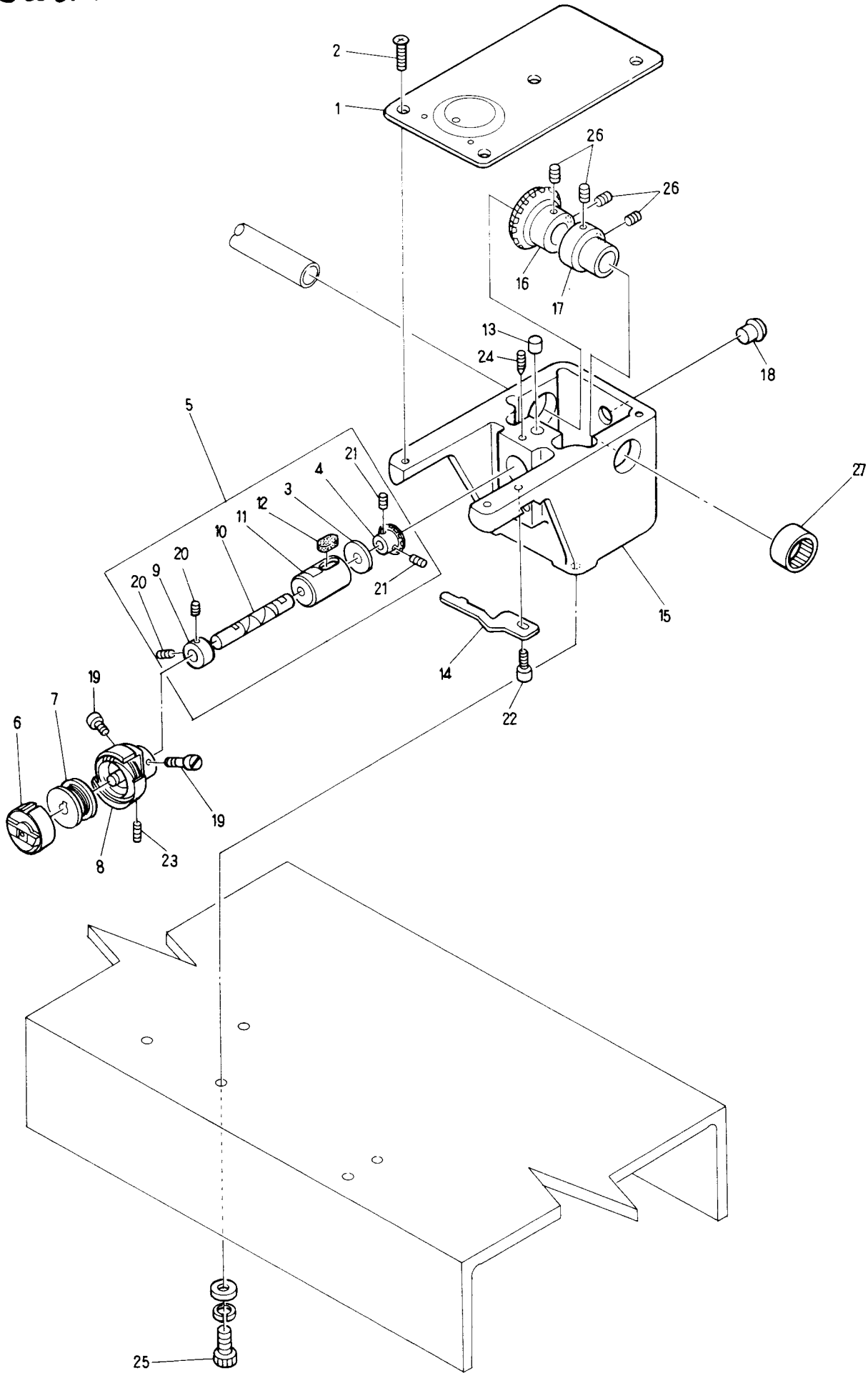
MODEL **BENYH-YN**
BENBH-YN



From the library of: Diamond Needle Corp



From the library of: Diamond Needle Corp

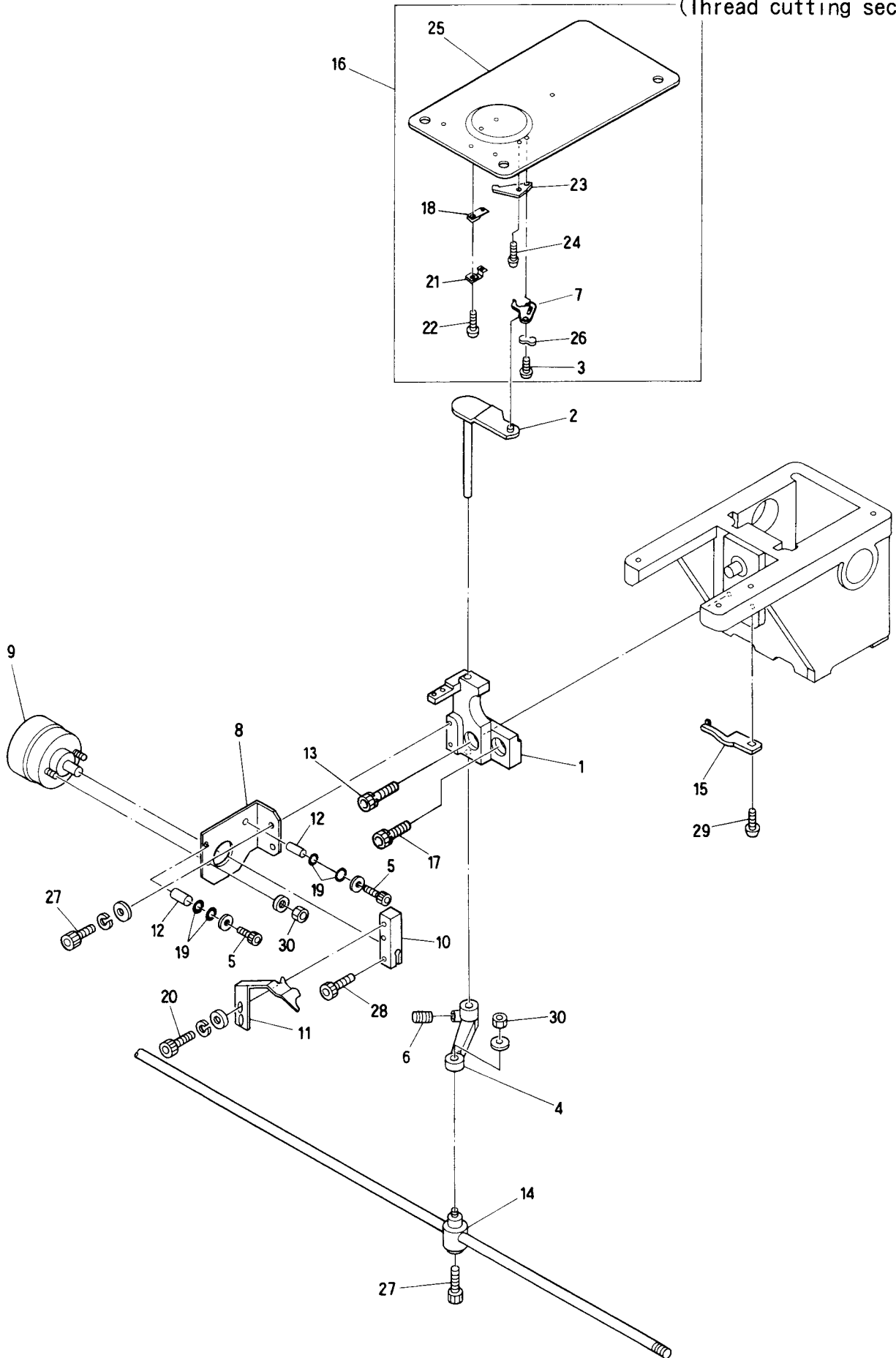


From the library of: Diamond Needle Corp

MODEL BENYH-YN
BENBH-YN

Barudan

④ Thread cutting mechanism I
(Thread cutting section)

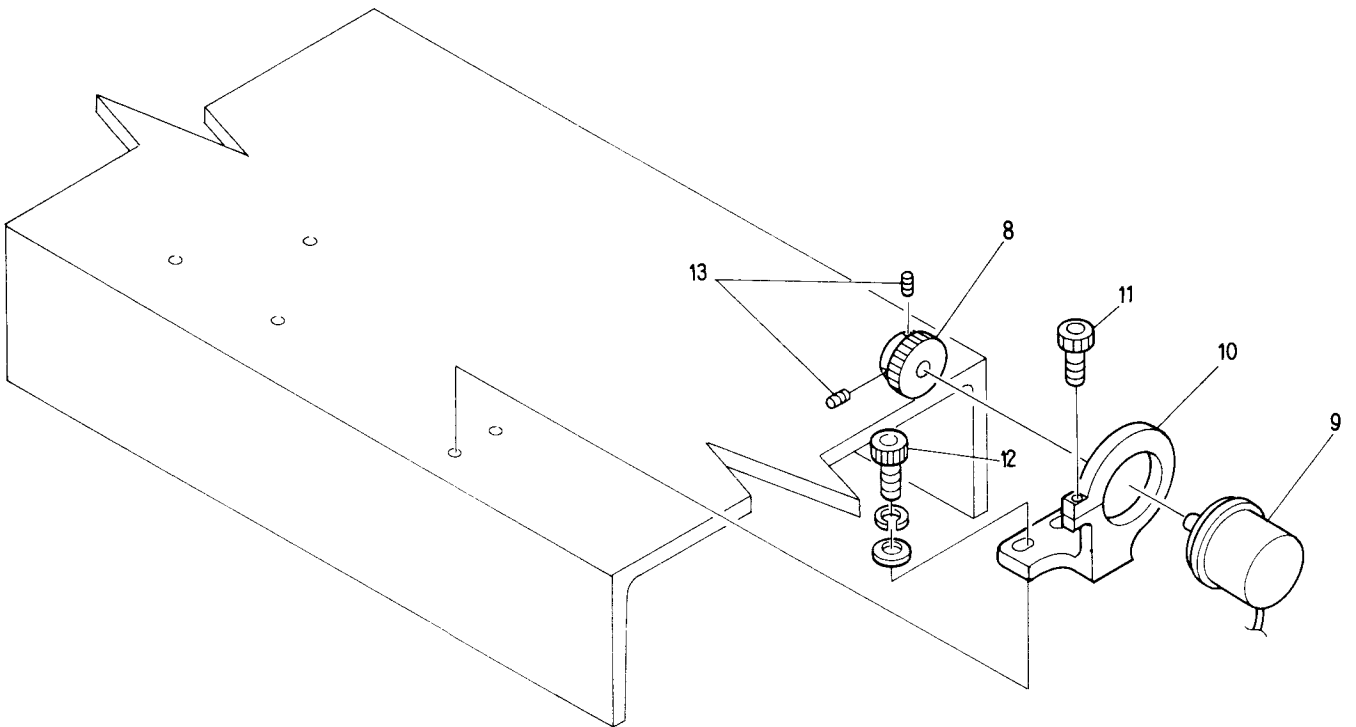
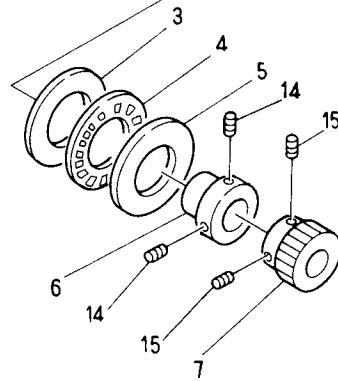
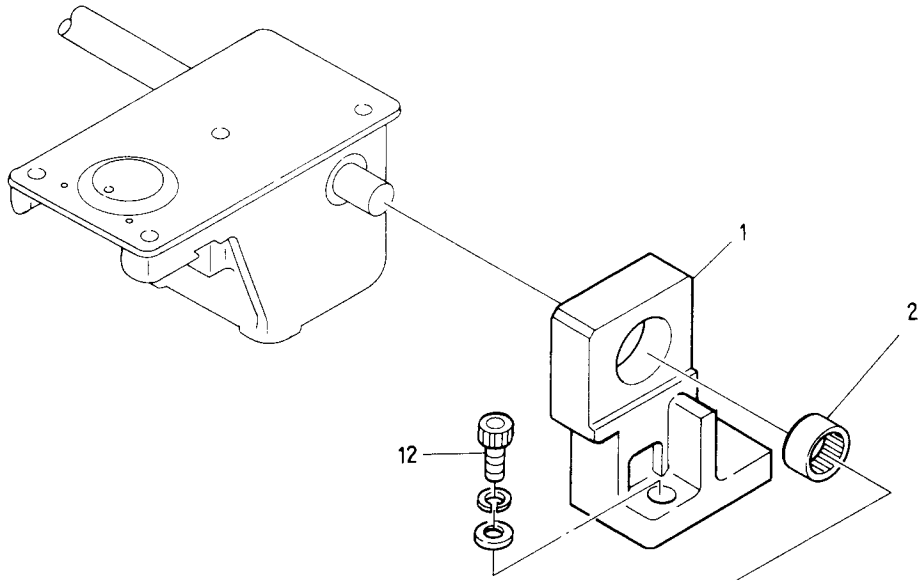


MODEL BENYH-YN
BENBH-YN

From the library of: Diamond Needle Corp

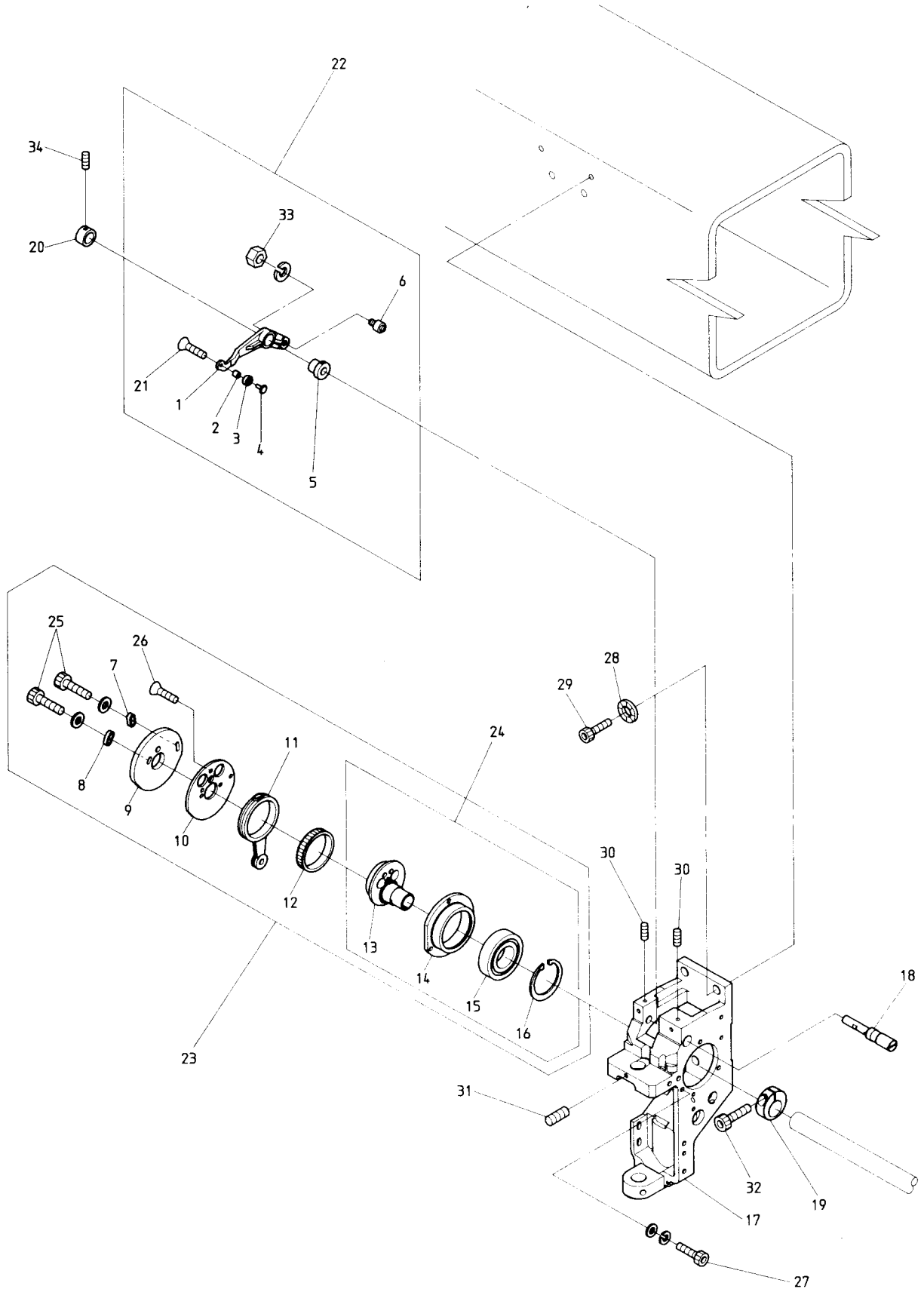
Barudan

⑥ Take up lever a'ssy I

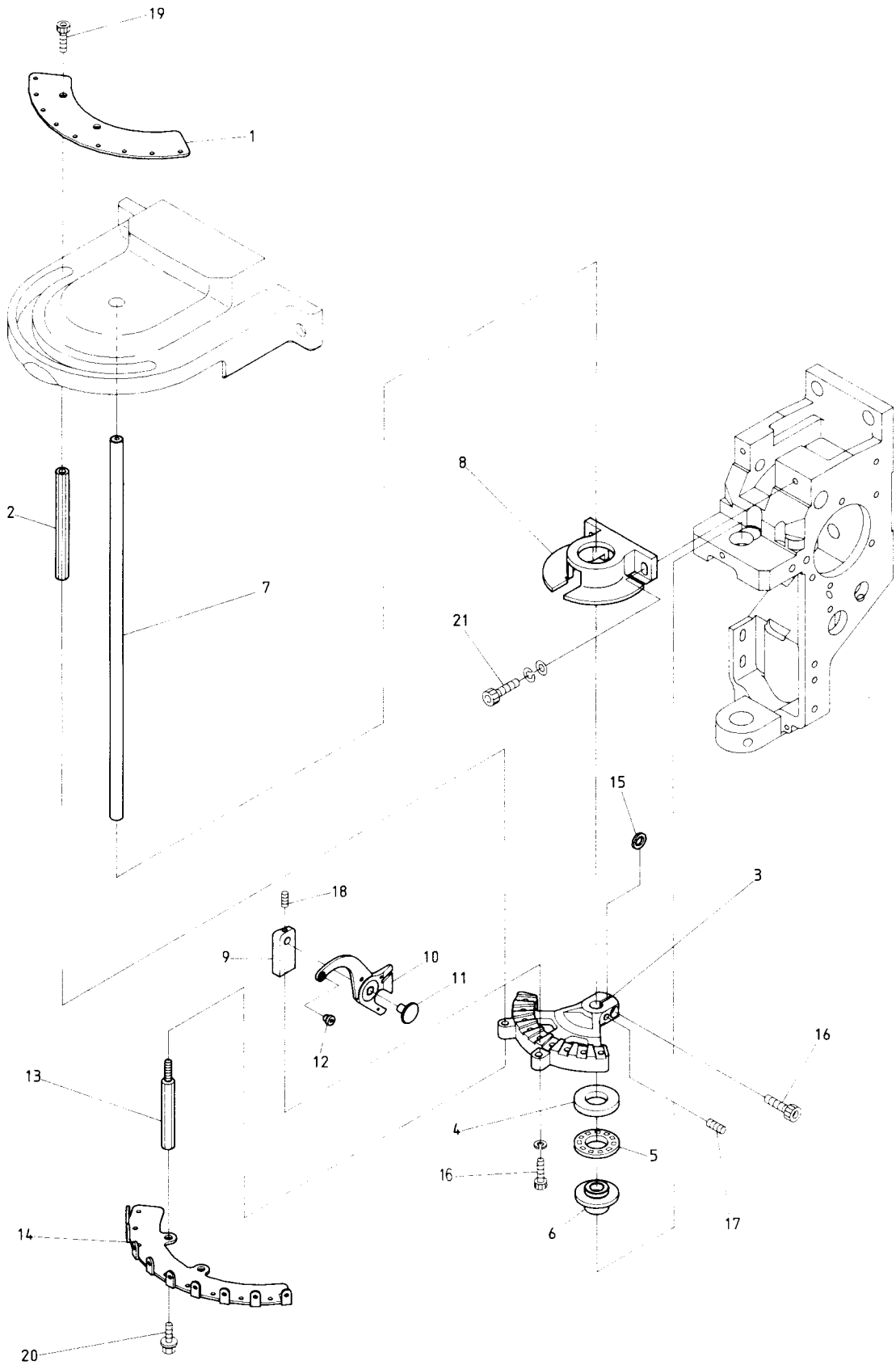


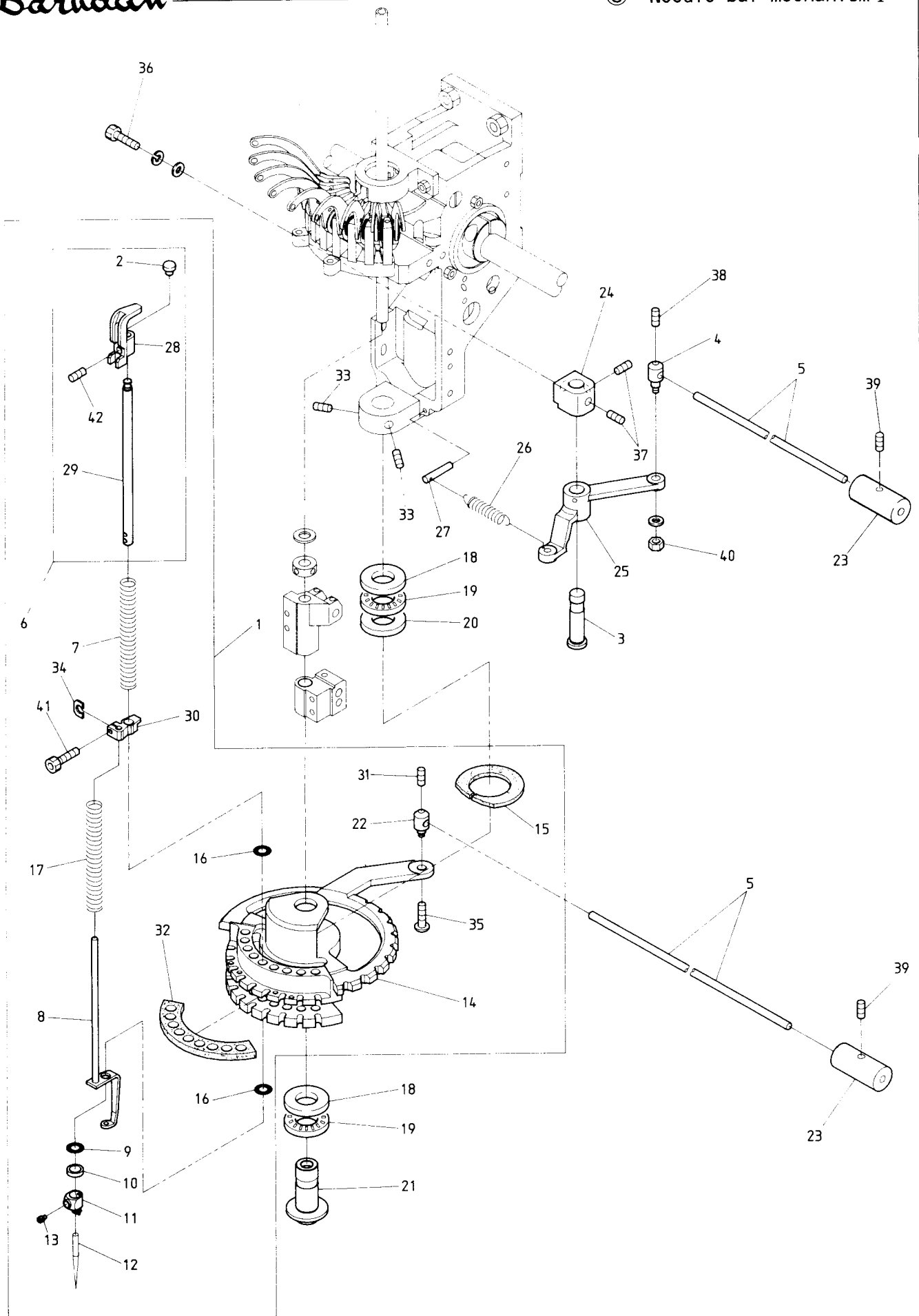
MODEL

**BENYH-YN
BENBH-YN**



From the library of: Diamond Needle Corp



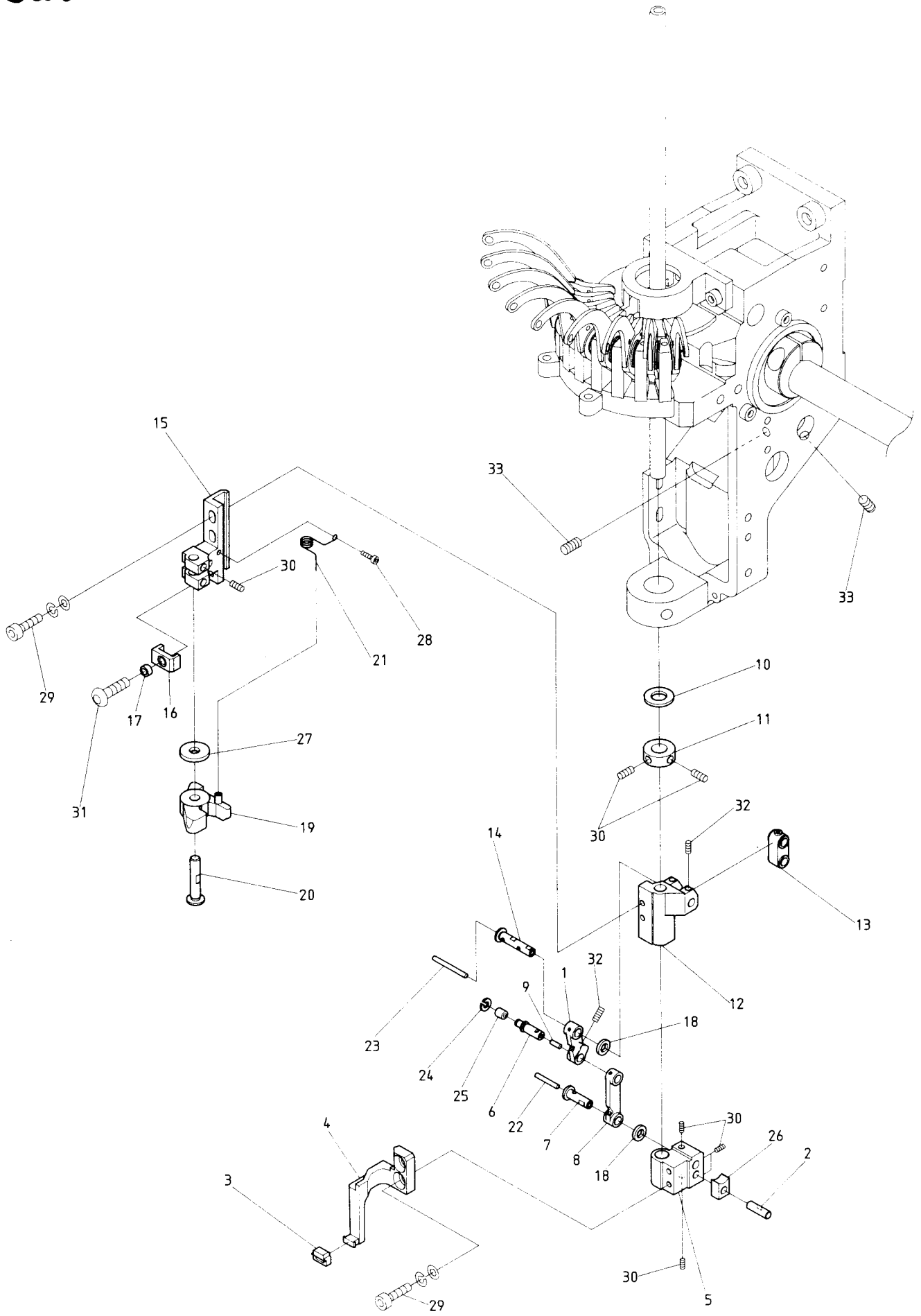


From the library of: Diamond Needle Corp

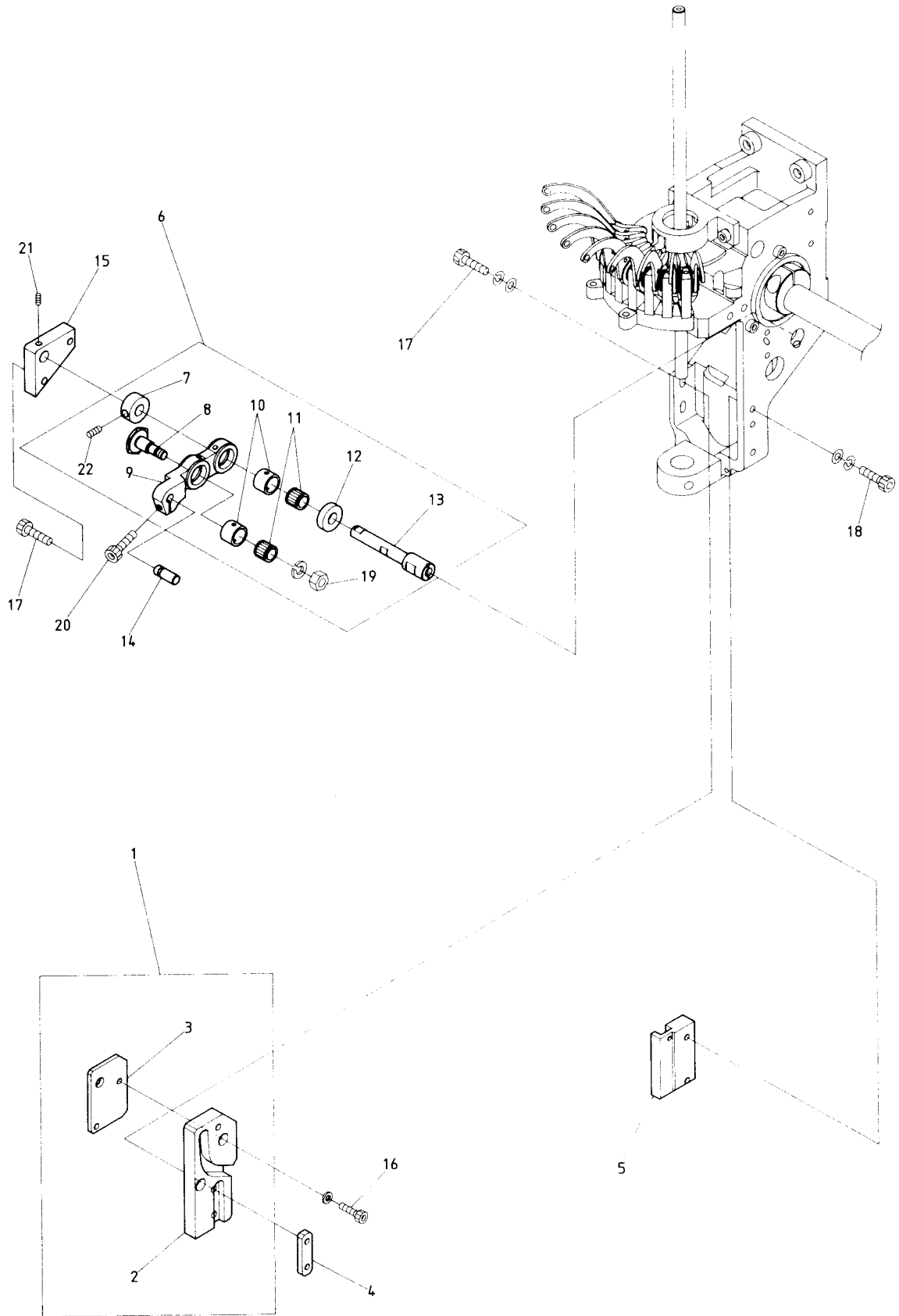
⑧ Needle bar mechanism I

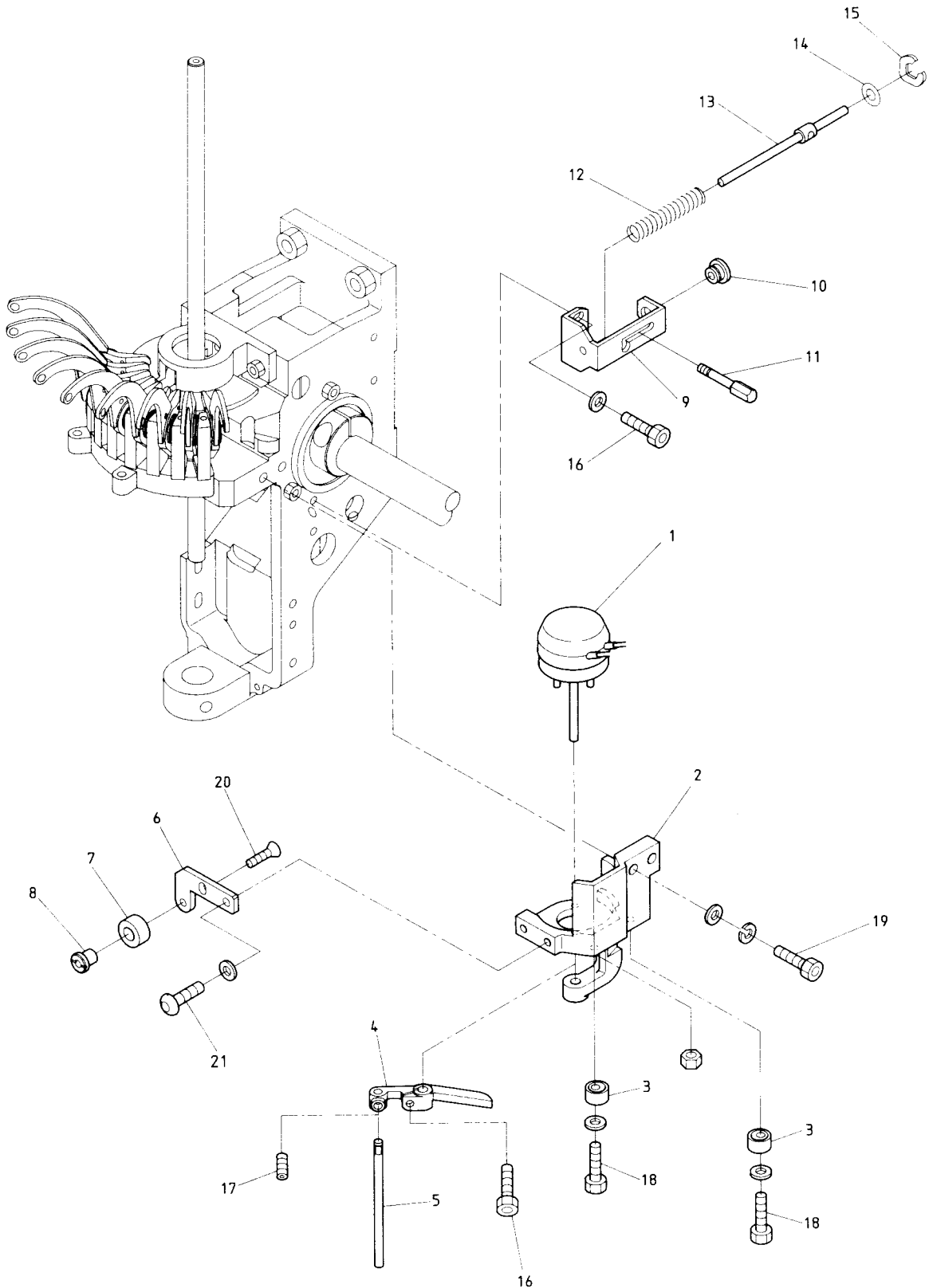
(H=Head Q'TY)

ITEM	LIST No.	DESCRIPTION	Q'TY	REMARK
1	HT230820	Turning plate a'ssy	H×1	
2	HT230130	Needle bar cap	H×9	
3	HB230190	Lock lever shaft	H×1	
4	KF230640	Lock connecting bar clamp	H×1	
5	KC330410	Lock connecting rod (L=2000)	6	
6	HT230810	Needle bar a'ssy	H×9	
7	HT230251	Needle bar spring (Upper)	H×9	
8	HT230141	Pressure foot	H×9	
9	KF230910	O-Ring (Small) P-6	H×9	
10	HT230120	Washer 2.4	H×9	
11	HT230670	Needle clamp (With hook)	H×9	
12	KF230250	Needle (DBK5-11)	H×9	
13	KF230240	Needle clamp screw (SM9/64)	H×9	
14	HT230570	Turning plate	H×1	
15	HT230690	Turning plate felt (Upper)	H×1	
16	A9014055	O-Ring (IAS-7) S-7	H×1	
17	HT230062	Needle bar spring (Under)	H×18	
18	A9011023	Thrust bearing outer (GS1528)	H×2	
19	A9011021	Thrust bearing (NTB-1528)	H×2	
20	A9011022	Thrust washer (AS-1528)	H×1	
21	HT230550	Driving shaft lower metal	H×1	
22	HT230180	Turning plate joint pin	H×1	
23	KF330180	Lock bar hand grip	4	
24	HB230180	Lock lever bracket	H×1	
25	KL230180	Lock lever	H×1	
26	KF230661	Lock lever spring	H×1	
27	KF230670	Lock lever spring pin	H×1	
28	HT230151	Needle bar guide	H×1	
29	HT230041	Needle bar	H×1	
30	HT230330	Cloth winder stop latch set clamp	H×1	
31		Hex. socket set screw M4×4		
32	HT230111	Turning plate felt	H×1	
33	A9012053	Hex. socket set screw (With steel ball) M6×0.7×8	H×2	
34	HT230262	Washer (For set clamp)	H×9	
35		Hex. socket button bolt M4×5		
36		Hex. socket bolt M8×18		
37		Hex. socket set screw M6×6		
38		Hex. socket set screw M4×6		
39		Hex. socket set screw M5×5		
40		Hex. nut M4 (II)		
41		Hex. socket bolt M3×8		
42		Hex. socket set screw M4×4 (With adhesion)		

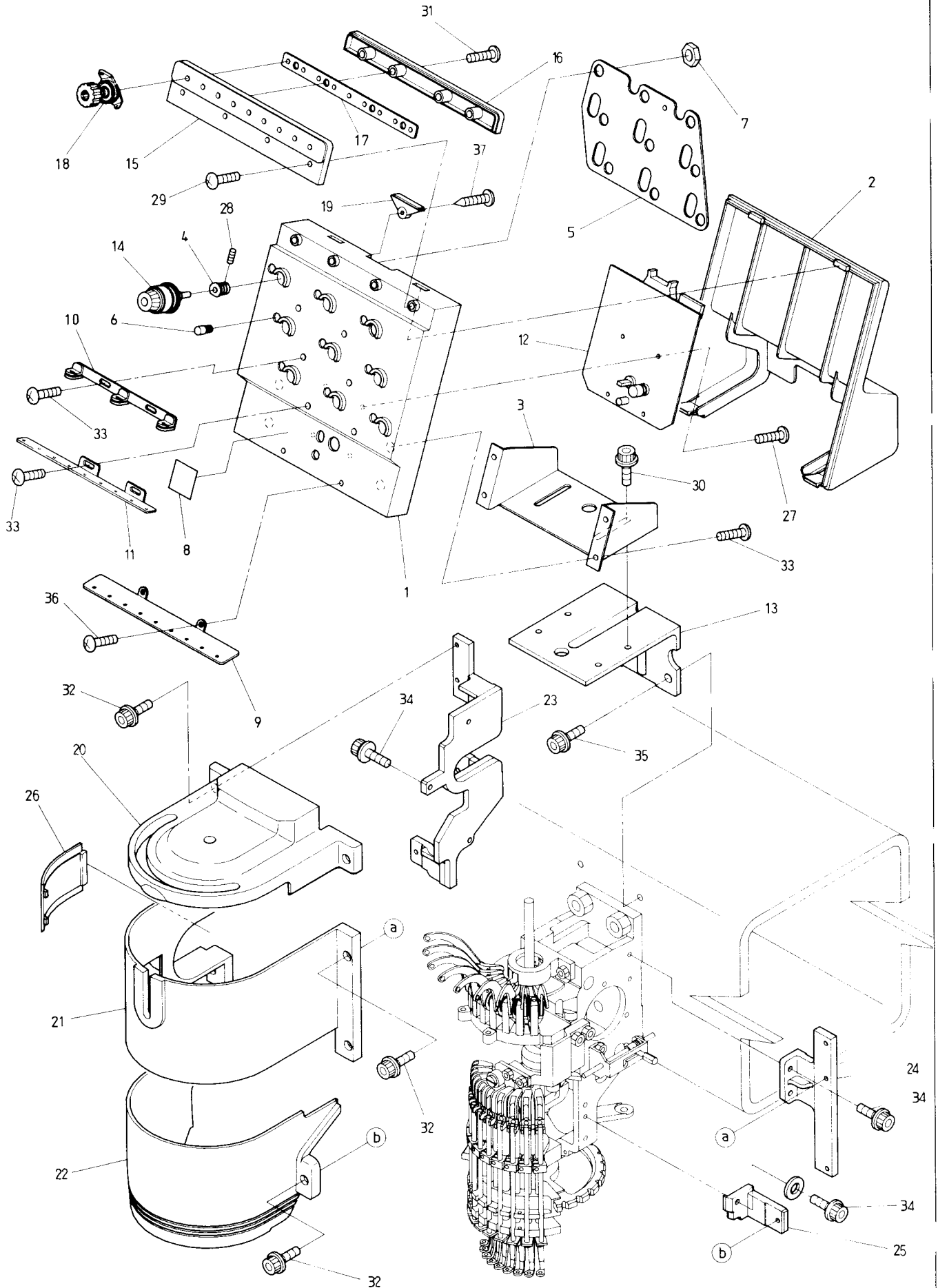


From the library of: Diamond Needle Corp





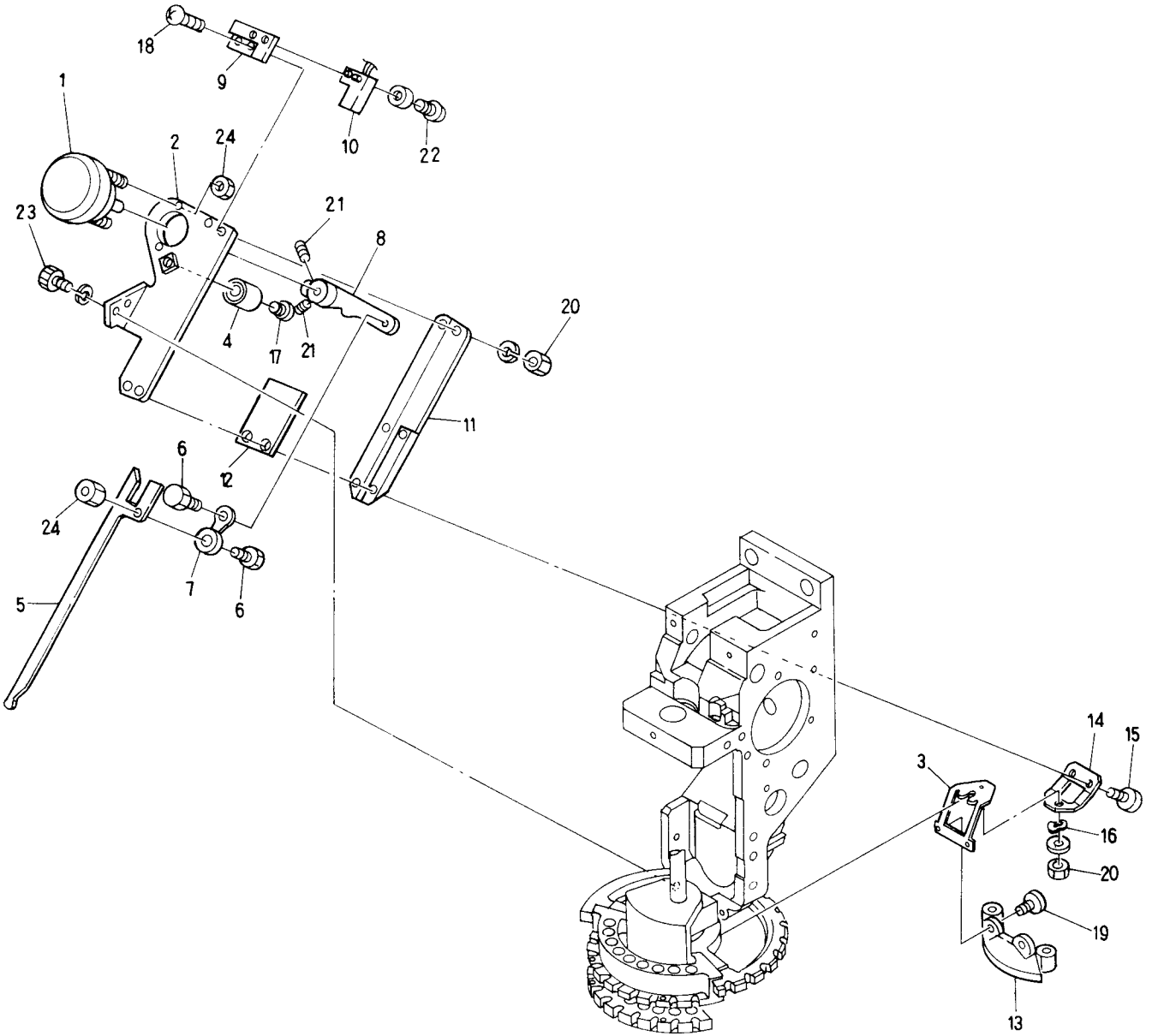
From the library of: Diamond Needle Corp



From the library of: Diamond Needle Corp

Barudan

⑬ Thread cutting mechanism II
(Thread away section)

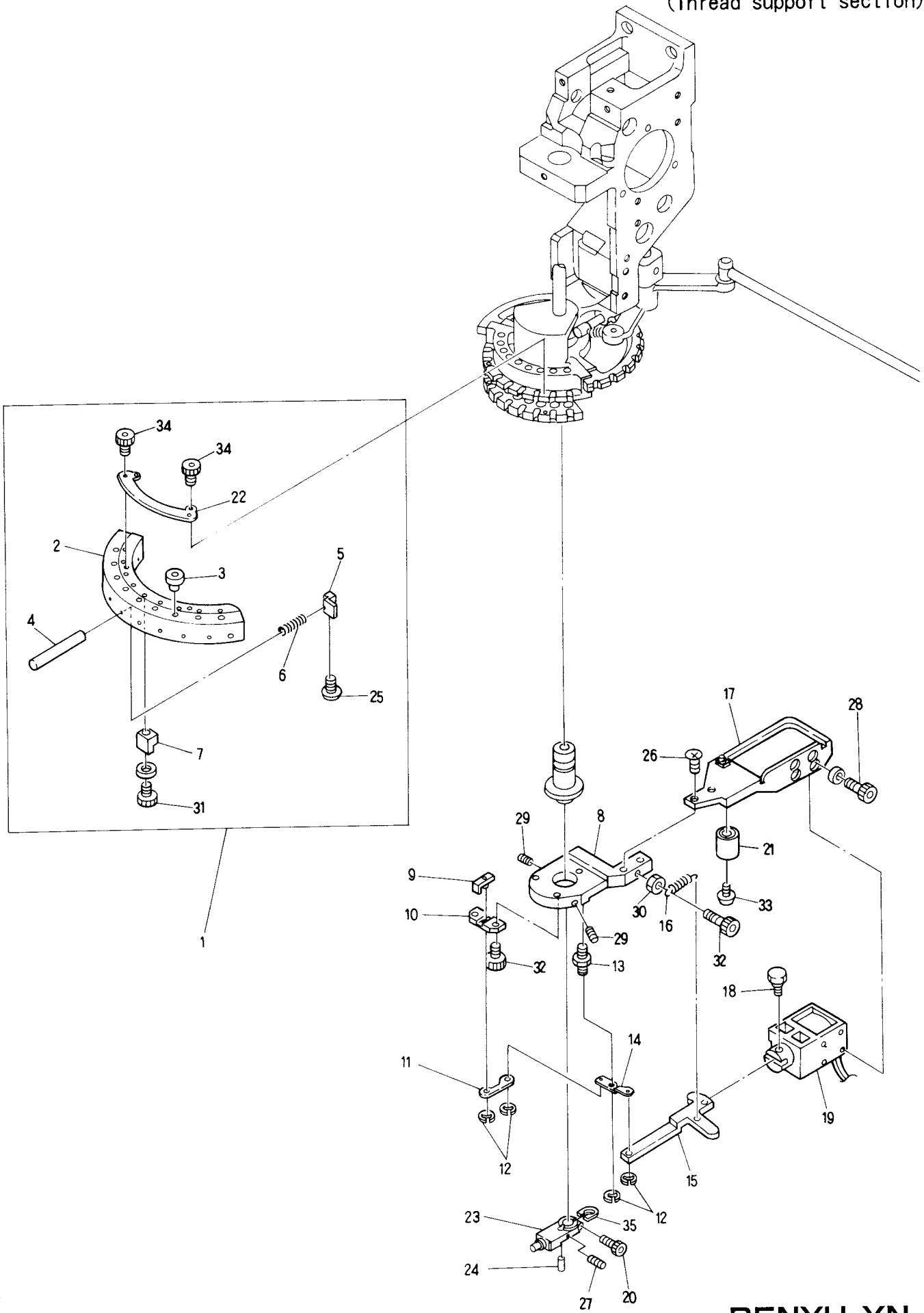


From the library of: Diamond Needle Corp

MODEL BENYH-YN
BENBH-YN

Barudan

⑭ Thread cutting mechanism III
(Thread support section)

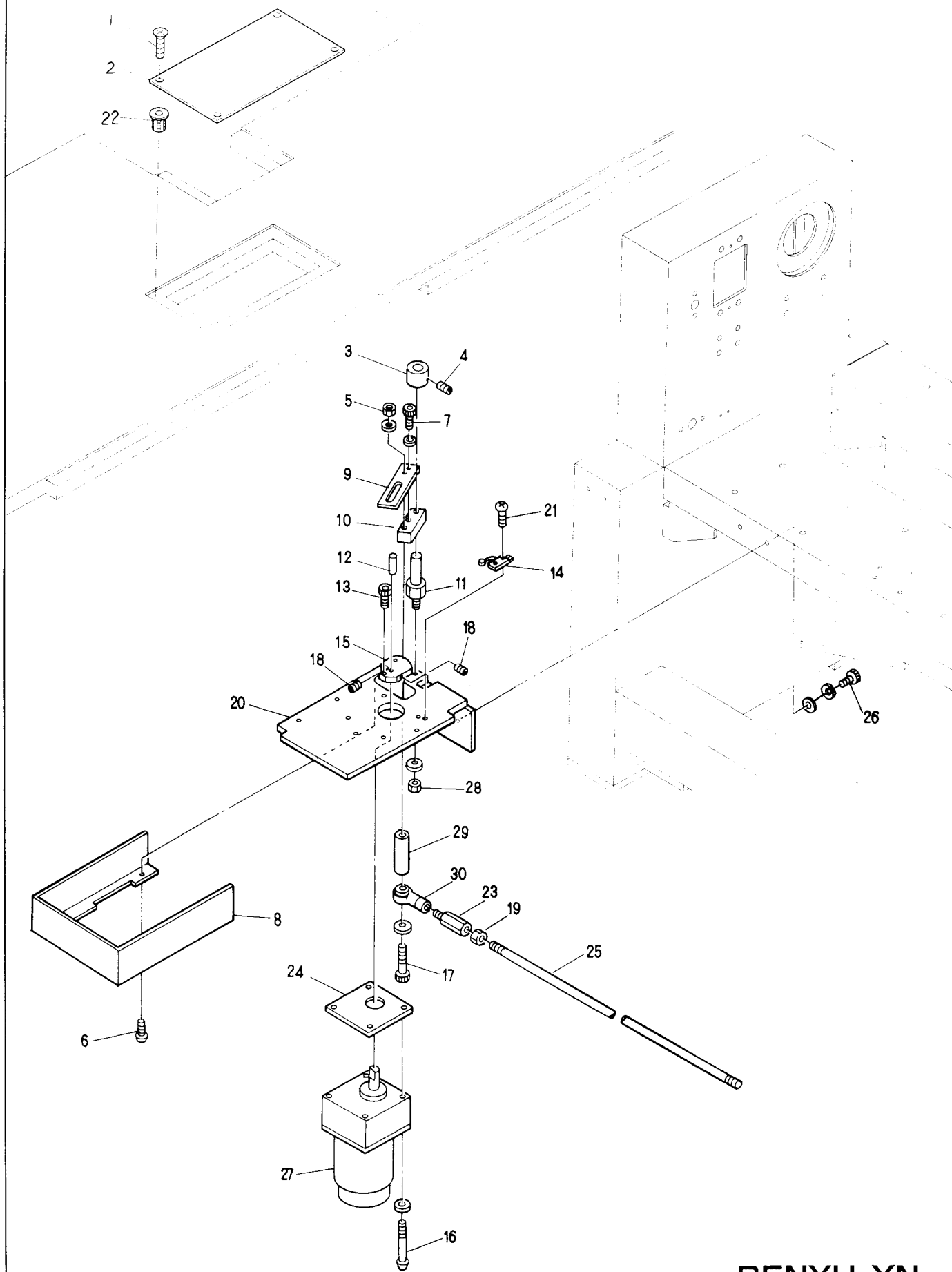


From the library of: Diamond Needle Corp

MODEL BENYH-YN
BENBH-YN

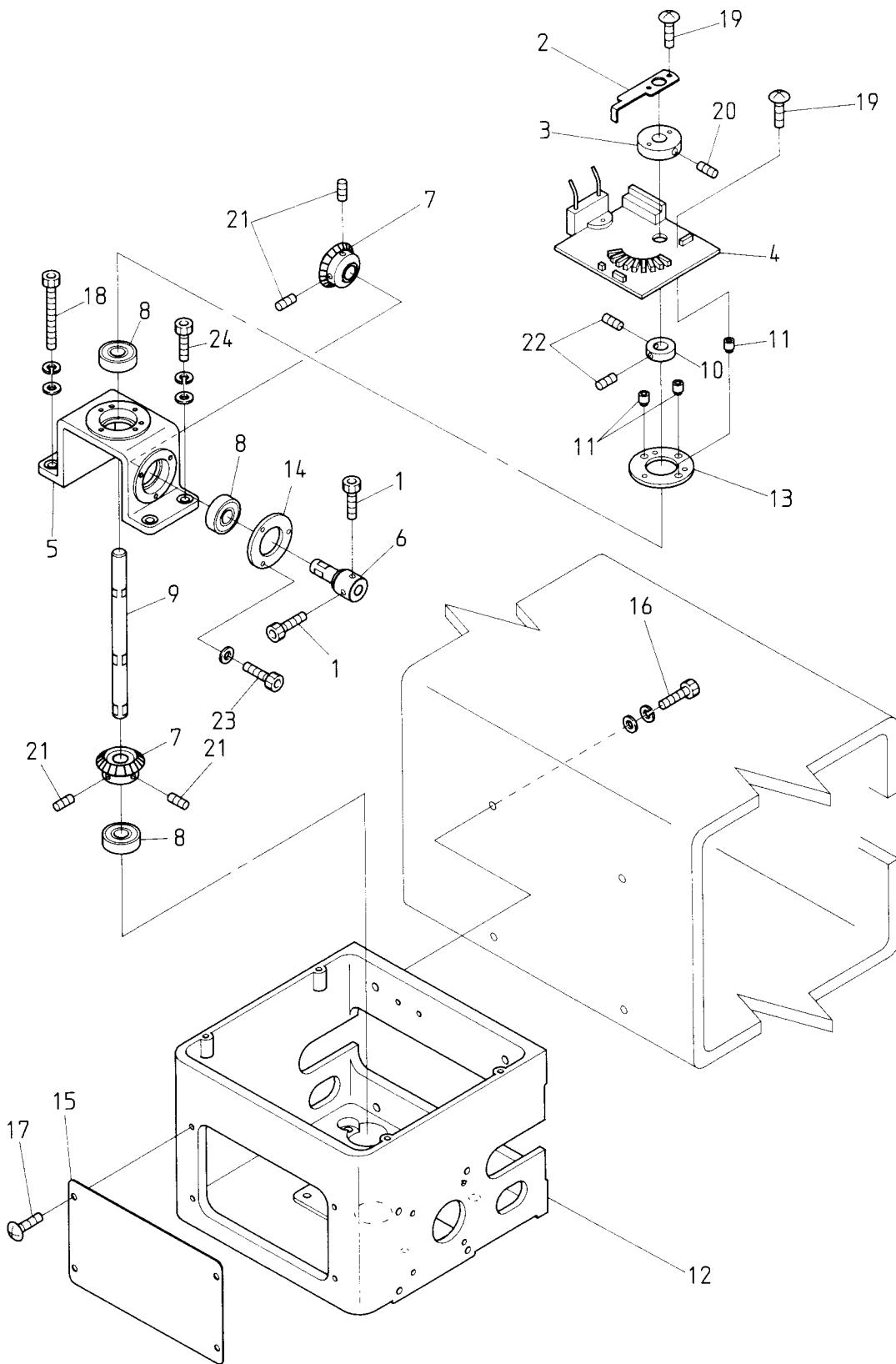
Barudan

⑮ Thread cutting mechanismIV
(Thread cutting drive section)

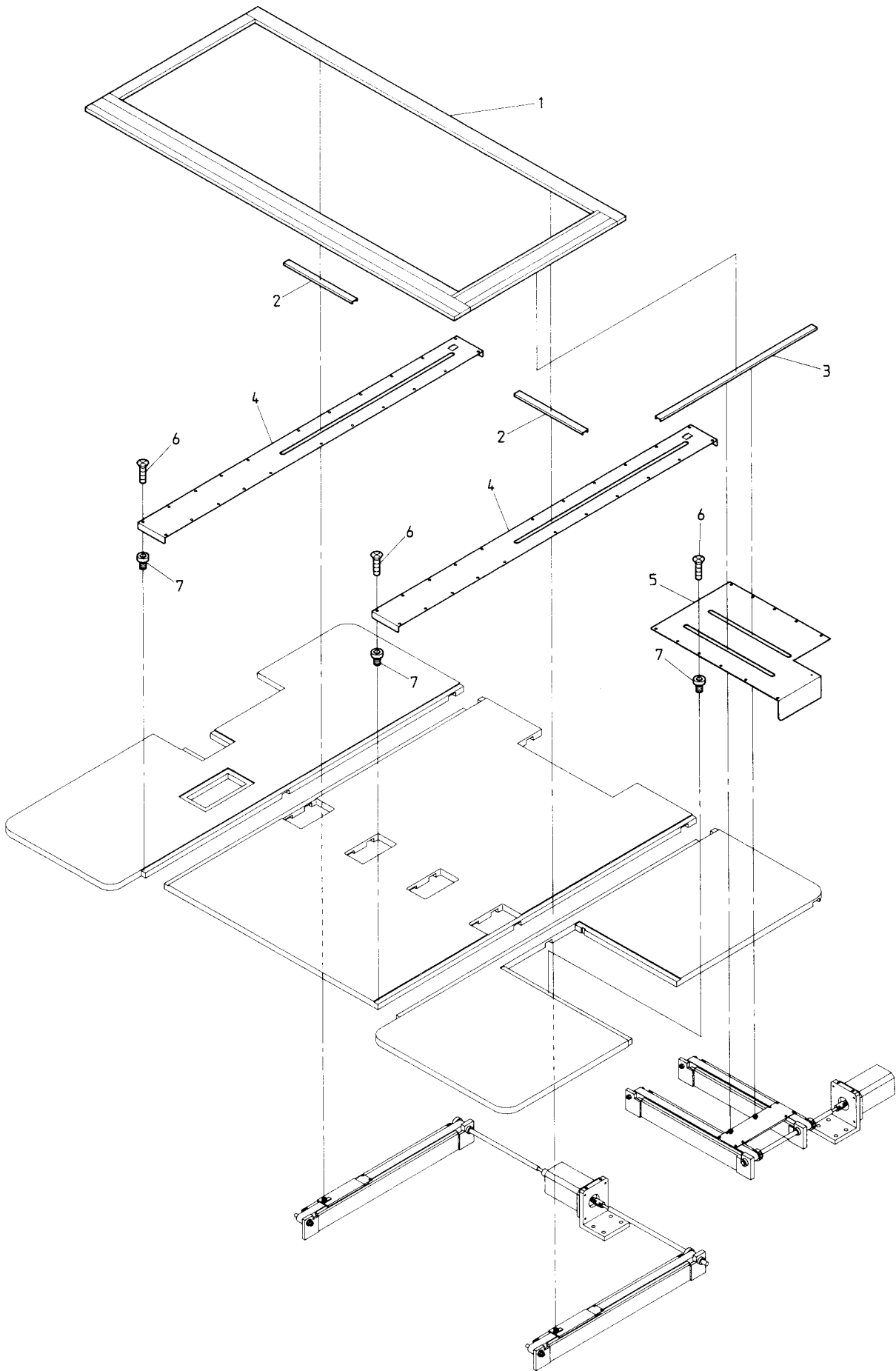


From the library of: Diamond Needle Corp

MODEL BENYH-YN
BENBH-YN



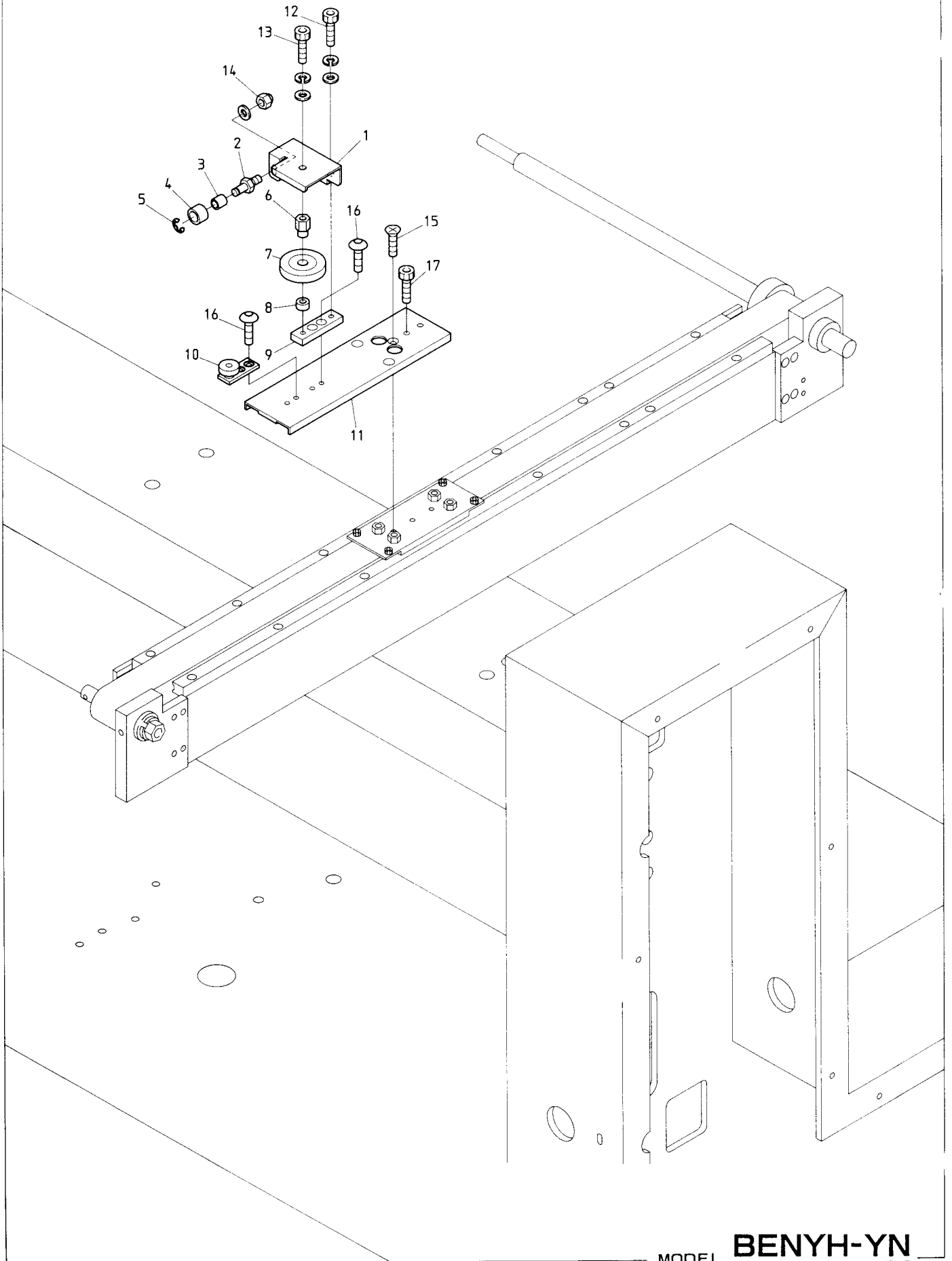
From the library of: Diamond Needle Corp



From the library of: Diamond Needle Corp

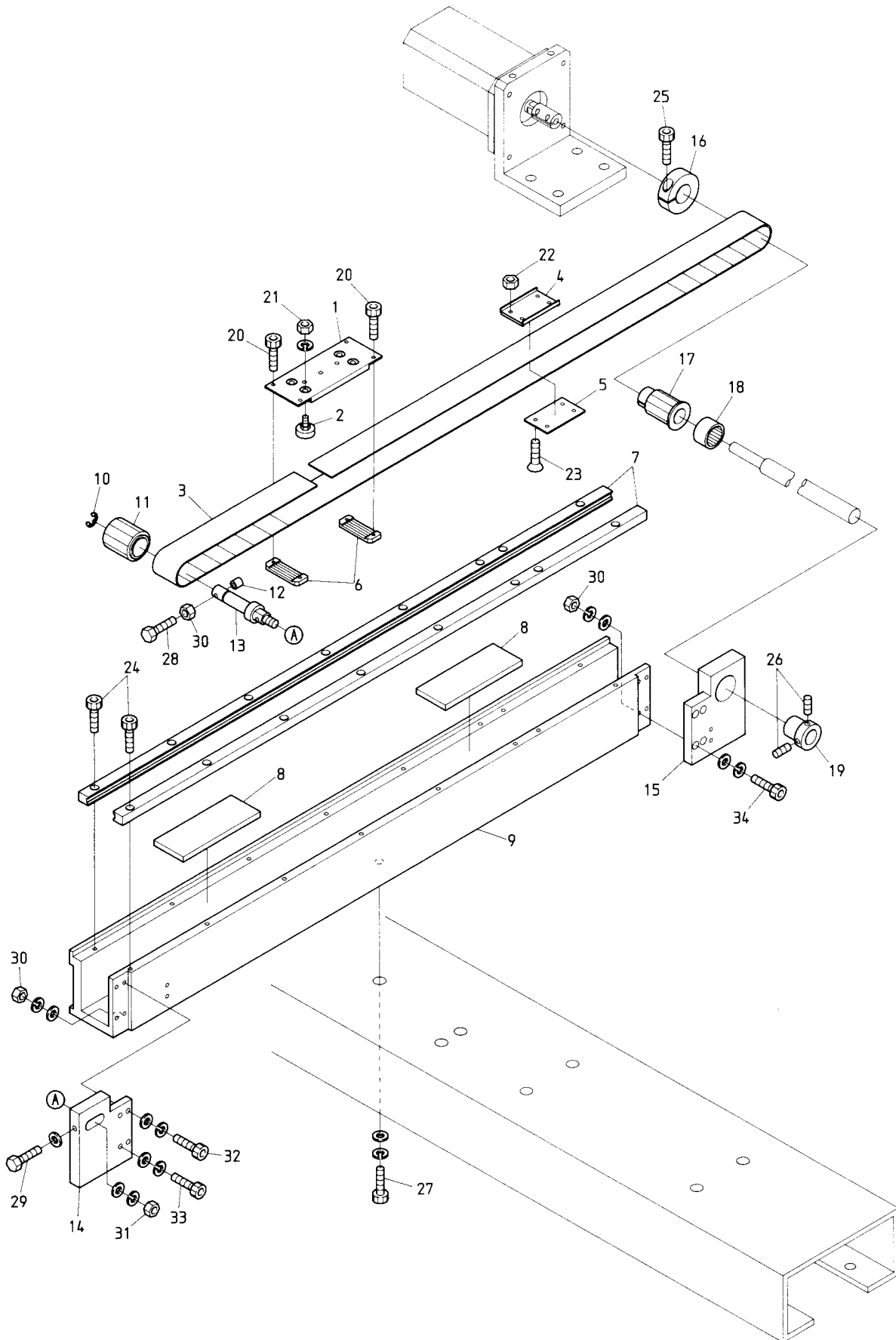
Barudan

⑳ Pantograph drive mechanism II
(H-Direction•Front)



From the library of: Diamond Needle Corp

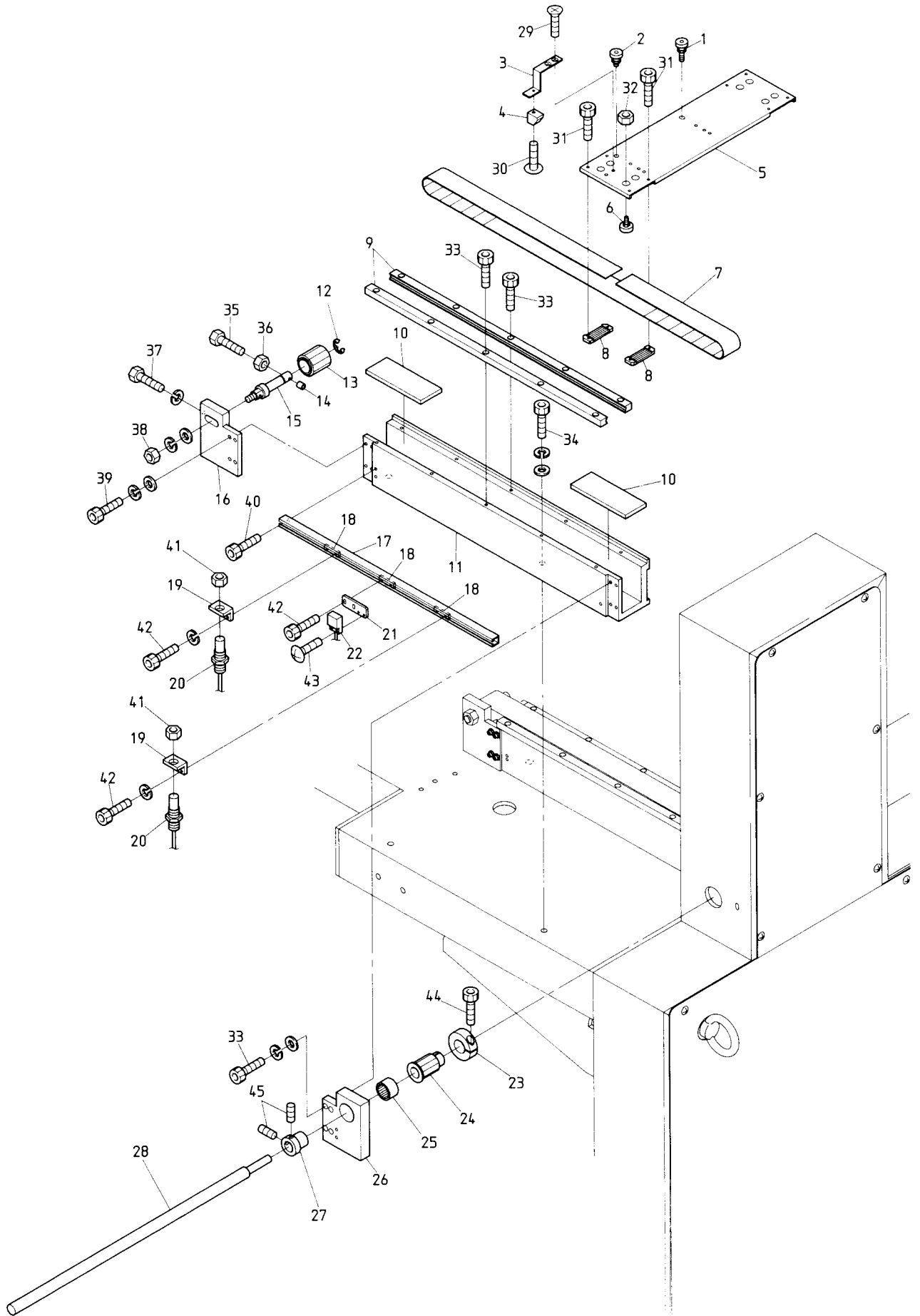
②① Pantograph drive mechanism III
(H-Direction•Rear)



From the library of: Diamond Needle Corp

Barudan

㉓ Pantograph drive mechanism V
(V-Direction Guide rail base relation)

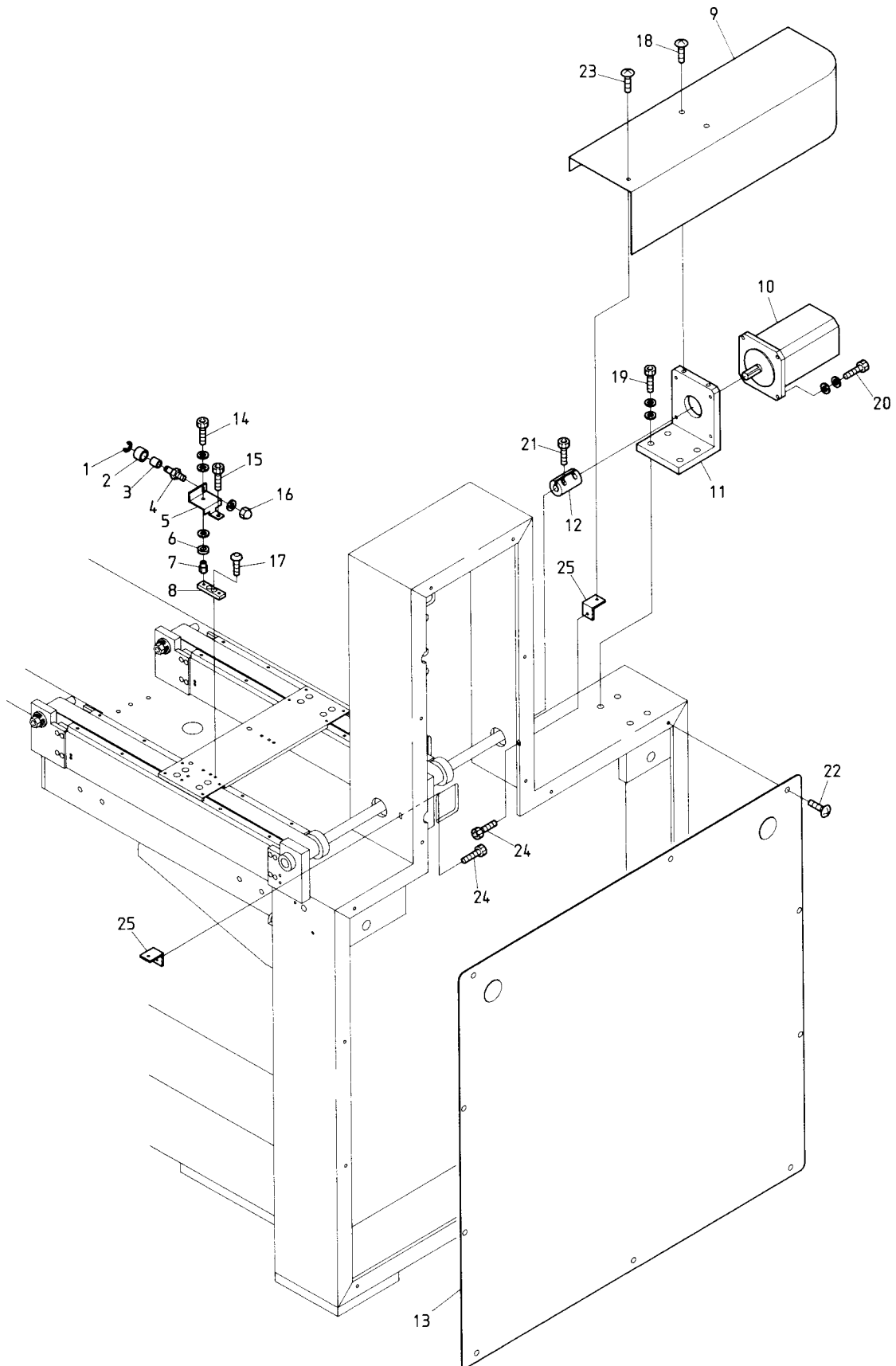


From the library of: Diamond Needle Corp

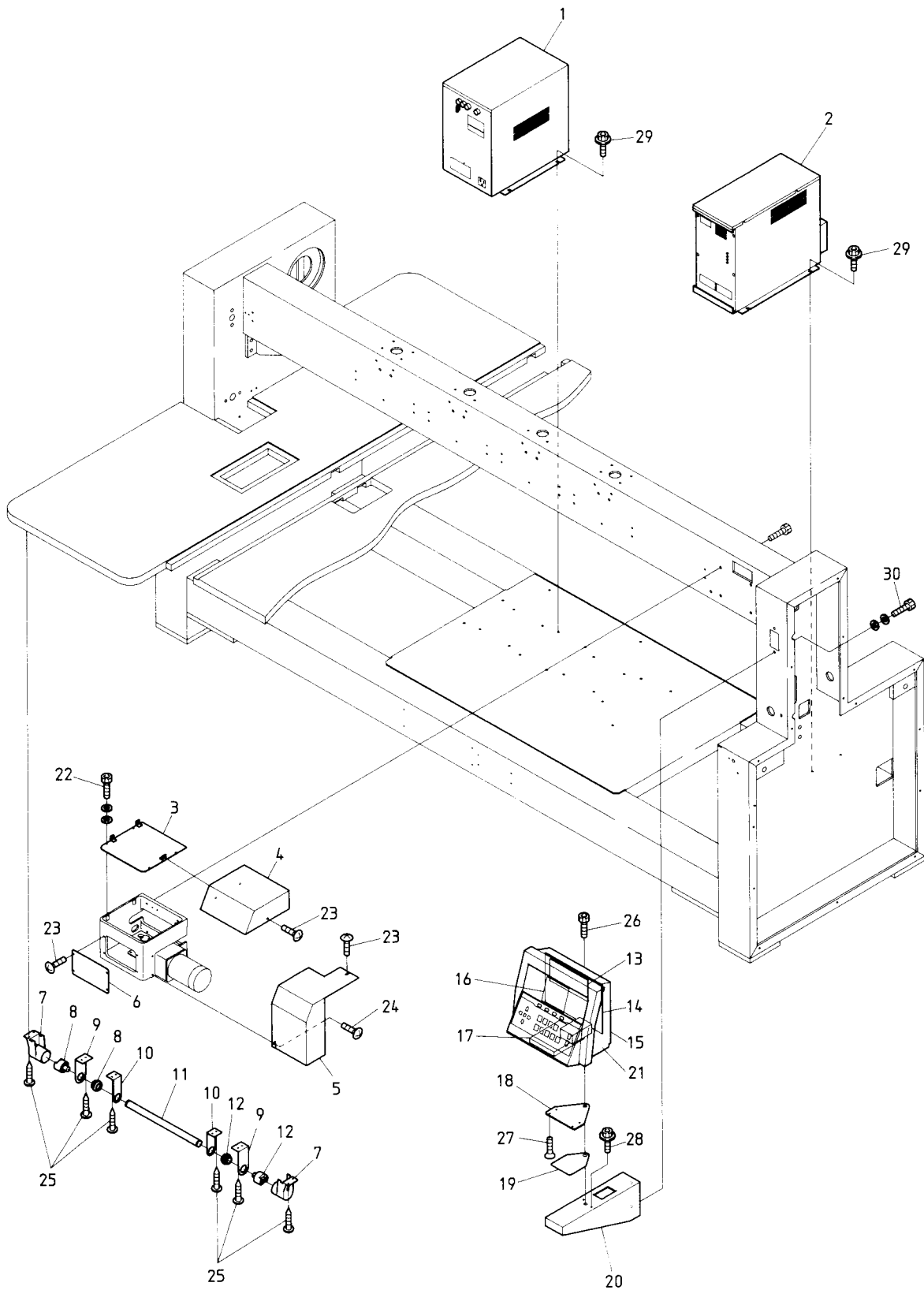
MODEL BENYH-YN
BENBH-YN

②③ Pantograph drive mechanism V (V-Direction · Guide rail base relation)

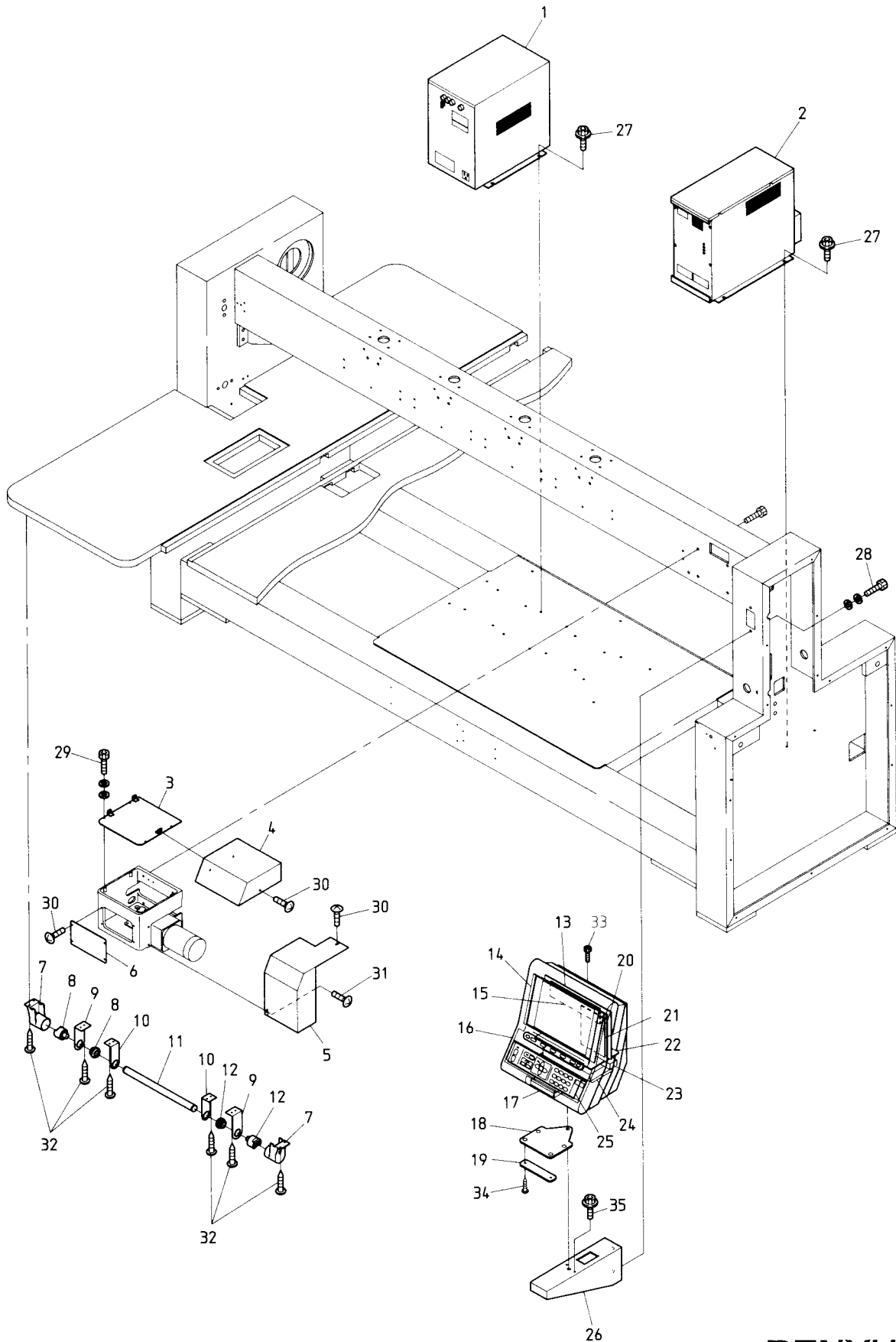
ITEM	LIST No	DESCRIPTION	Q'TY	REMARK
1	HP483111	Bearing pin a'ssy B	1	
2	HP483370	Bearing pin a'ssy	1	
3	HP451100	V-Pantograph origin point magnet bracket	1	
4	A9052030	Magnet M-102A-02	1	
5	HP482892	V-roller base	1	
6	HP482950	Roller pin a'ssy A	8	
7	A9020098	Timing belt (300S5M2000)	2	
8	HP482940	Timing belt set rack (5M)	4	
9	KK480140	V-Trench rail (L=430)	4	
10	KN480061	Rail base felt 100×38×6	4	
11	HP48217G300	V-Guide rail base	2	
12	A9012052	E-Ring (φ10)	2	
13	HP482980	Pantograph driving pulley (Front) S5M	2	
14	HH482110	Pulley shaft bolt cap	2	
15	HH481991	Pulley shaft	2	
16	HH482000	H-Guide front pulley bracket	2	
17	HP45112G300	V-Pantograph origin point rail	1	
18	KU460270	Plate nut (M3)	3	
19	MT460240	RS-001 bracket	2	
20	A9052024	Switch RS-001	2	
21	KN450330	MH-601A Proximity switch fixing bracket	1	
22	A9052031	Magnetic proximity switch MH-601A	1	
23	HH481980	Clampring φ19	2	
24	HV480040	Pantograph driving pulley (Rear) S5M	2	
25	A9011063	Needle bearing TLA2016	2	
26	HV480030	H-Guide pulley bracket	2	
27	HH481970	Pulse motor connecting shaft collar	2	
28	RB480070	V-Direction motor shaft	1	
29		Flush screw M4×8		
30		Truss screw M3×6		
31		Hex. socket bolt M3×6		
32		Hex. nut M5		
33		Hex. socket bolt M4×15		
34		Hex. socket bolt M8×25		
35		Hex. bolt M4×35		
36		Hex. nut M4		
37		Hex. bolt M4×25		
38		Hex. nut M8		
39		Hex. socket bolt M4×18		
40		Hex. socket bolt M4×8		
41		Hex. nut M14		
42		Hex. socket bolt M3×8		
43		Truss screw M5×18		
44		Hex. socket bolt M5×18		
45		Hex. socket set screw M5×8		



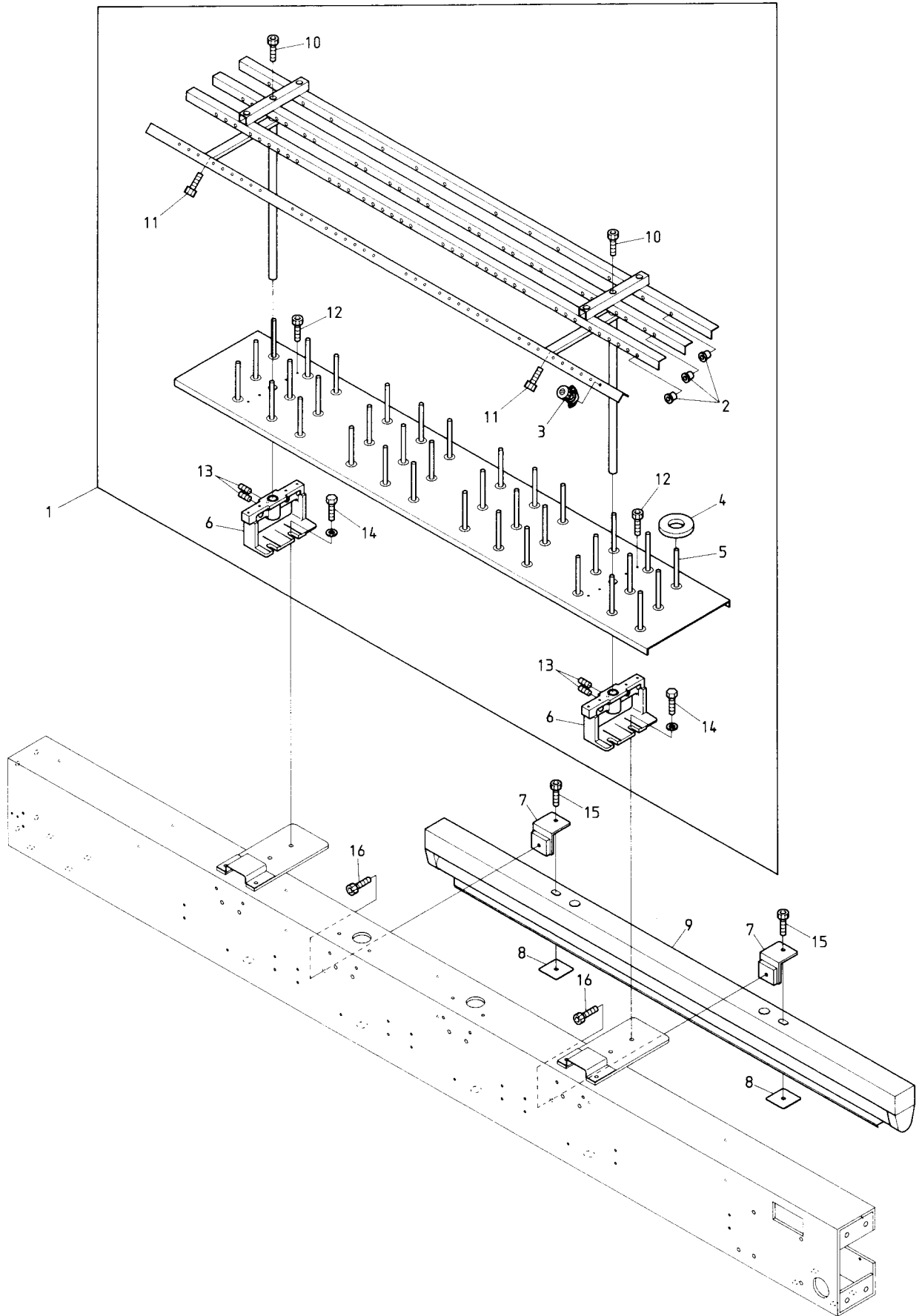
From the library of: Diamond Needle Corp



From the library of: Diamond Needle Corp



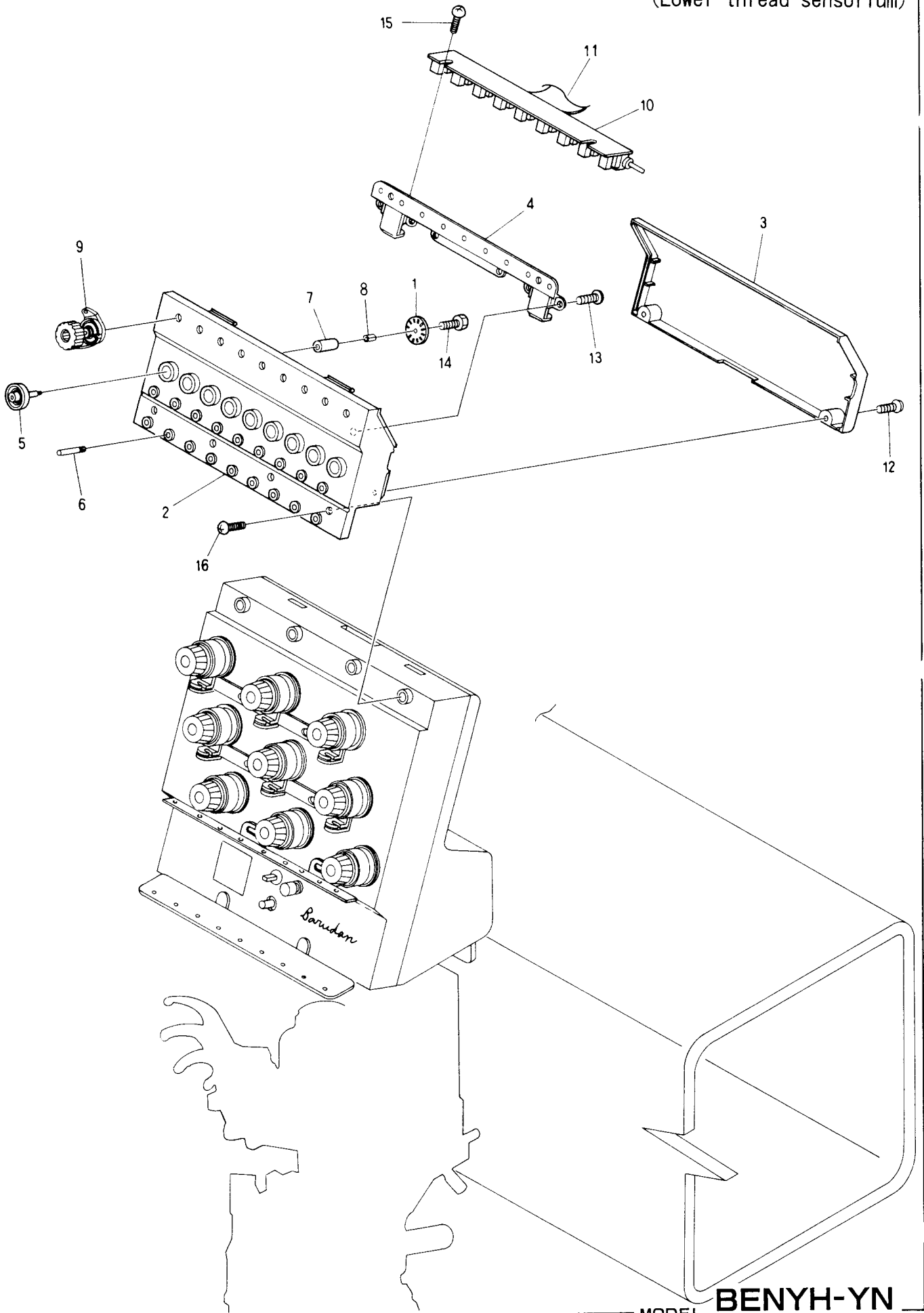
From the library of: Diamond Needle Corp



From the library of: Diamond Needle Corp

Barudan

⑳ Thread guide mechanism
(Lower thread sensorium)



From the library of: Diamond Needle Corp

I N D E X

L I S T No.	PAGE	ITEM No.	L I S T No.	PAGE	ITEM No.
A 9 0 1 0 0 0 1	3 5	8	A 9 0 5 2 0 2 4	4 7	2 0
A 9 0 1 0 0 1 7	1 3	1 5	A 9 0 5 2 0 2 8	2 7	1 0
A 9 0 1 0 1 0 0	1 1	4	A 9 0 5 2 0 3 0	4 5	6
A 9 0 1 0 1 0 1	1 1	3	A 9 0 5 2 0 3 0	4 7	4
A 9 0 1 0 1 0 2	1 1	5	A 9 0 5 2 0 3 1	4 5	1 4
A 9 0 1 1 0 2 1	1 5	5	A 9 0 5 2 0 3 1	4 7	2 2
A 9 0 1 1 0 2 1	1 7	1 9	A 9 0 5 6 0 1 0	9	9
A 9 0 1 1 0 2 2	1 7	2 0	A 9 0 5 6 0 1 1	3 7	1 5
A 9 0 1 1 0 2 3	1 7	1 8	A 9 0 5 6 0 1 3	2 9	1 9
A 9 0 1 1 0 6 3	4 3	1 8	A 9 0 5 6 0 1 8	2 7	1
A 9 0 1 1 0 6 3	4 7	2 5	A 9 0 5 6 0 2 0	2 3	1
A 9 0 1 1 1 1 1	7	2 7	A 9 0 6 5 0 2 8	3 1	2 7
A 9 0 1 1 1 1 1	1 1	2	E B Y 0 1 1 1 0	2 5	1 2
A 9 0 1 1 1 1 1	3 3	2 3	E B Y 0 1 1 2 0	3 5	4
A 9 0 1 1 1 5 2	1 5	4	E B Y 0 1 2 4 0	5 1	1 3
A 9 0 1 2 0 0 1	3 7	7	E B Y 0 1 2 5 0	5 1	1 4
A 9 0 1 2 0 0 2	3 1	3 0	E B Y 0 1 2 6 0	5 1	1 6
A 9 0 1 2 0 0 2	3 7	1 4	E B Y 0 1 2 7 0	5 1	2 1
A 9 0 1 2 0 5 1	2 3	1 5	E B Y 0 1 3 5 0	5 1	1 7
A 9 0 1 2 0 5 2	4 7	1 2	H B 2 1 0 2 3 0	7	5
A 9 0 1 2 0 5 3	1 7	3 3	H B 2 1 0 2 4 0	7	
A 9 0 1 2 0 5 5	3 7	1 8	H B 2 2 0 0 1 0	7	
A 9 0 1 2 0 5 6	2 9	1 2	H B 2 3 0 0 1 1	1 3	1 3
A 9 0 1 2 0 6 8	3 3	1 3	H B 2 3 0 0 2 0	1 3	1 1
A 9 0 1 2 1 2 6	4 9	3	H B 2 3 0 0 3 0	1 3	1 4
A 9 0 1 2 1 2 6	4 1	3	H B 2 3 0 0 4 0	1 3	1 9
A 9 0 1 2 1 2 7	4 1	5	H B 2 3 0 0 5 1	1 3	1 0
A 9 0 1 2 1 2 7	4 9	1	H B 2 3 0 0 7 0	1 3	8
A 9 0 1 2 1 4 3	3 7	2 2	H B 2 3 0 0 8 0	1 3	7
A 9 0 1 2 1 6 3	1 3	1 6	H B 2 3 0 1 1 1	1 3	5
A 9 0 1 2 1 6 4	1 9	1 0	H B 2 3 0 1 6 0	1 9	1 1
A 9 0 1 2 2 1 9	4 5	8	H B 2 3 0 1 8 0	1 7	2 4
A 9 0 1 2 2 3 0	3	1 6	H B 2 3 0 1 9 0	1 7	3
A 9 0 1 2 3 6 7	1 9	2 7	H B 2 3 0 2 2 0	2 1	1 4
A 9 0 1 2 3 6 8	1 9	1 7	H B 2 3 0 2 4 1	2 1	9
A 9 0 1 2 9 5 2	4 3	1 0	H B 2 3 0 2 6 1	2 1	8
A 9 0 1 3 0 4 5	2 7	1 6	H B 2 3 0 2 7 1	2 1	7
A 9 0 1 3 0 6 6	9	2 6	H B 2 3 0 2 8 1	2 1	1 2
A 9 0 1 4 0 2 2	7	1 8	H B 2 3 0 3 4 1	1 3	1 2
A 9 0 1 4 0 5 1	2 3	1 4	H B 2 3 0 3 5 0	2 1	1 0
A 9 0 1 4 0 5 5	1 7	1 6	H B 2 3 0 3 6 0	2 1	1 1
A 9 0 2 0 0 9 8	4 3	3	H B 2 3 0 4 9 3	1 3	9
A 9 0 2 0 0 9 8	4 7	7	H B 2 3 0 6 2 0	1 3	4
A 9 0 5 2 0 0 5	3 1	1 4	H B 2 3 0 6 5 0	1 3	2 1
A 9 0 5 2 0 2 4	4 5	1 2	H B 2 3 0 6 9 1	1 3	

I N D E X

L I S T No.	PAGE	ITEM No.	L I S T No.	PAGE	ITEM No.
HB 2 3 0 7 0 1	2 1	6	HH 3 3 0 7 7 0	3 7	1 0
HB 2 3 0 7 1 0	1 3	2 4	HH 3 3 0 8 1 0	3 7	2 6
HB 2 3 0 7 5 0	1 5	1 2	HH 4 8 1 9 7 0	1 1	6
HB 2 3 0 8 0 0	1 3	2 0	HH 4 8 1 9 7 0	4 3	1 9
HB 2 4 0 0 1 1	2 3	2	HH 4 8 1 9 7 0	4 7	2 7
HB 2 4 0 0 2 0	2 3	4	HH 4 8 1 9 8 0	4 3	1 6
HB 2 4 0 0 3 0	2 3	5	HH 4 8 1 9 8 0	4 7	2 3
HB 2 4 0 0 4 1	2 3	3	HH 4 8 1 9 9 1	4 3	1 3
HB 2 4 0 0 6 0	2 3	9	HH 4 8 1 9 9 1	4 7	1 5
HB 2 4 0 0 7 0	2 3	1 3	HH 4 8 2 0 0 0	4 3	1 4
HB 2 4 0 0 8 0	2 3	1 1	HH 4 8 2 0 0 0	4 7	1 6
HB 2 4 0 0 9 0	2 3	1 0	HH 4 8 2 0 3 1	4 3	4
HB 2 4 0 1 1 0	2 3	1 2	HH 4 8 2 0 4 1	4 3	4
HB 2 4 0 1 5 1	1 5	2	HH 4 8 2 0 9 G 6 0	4 3	9
HB 2 4 0 1 6 1	1 5	1 3	HH 4 8 2 1 1 0	4 3	1 2
HB 2 4 0 2 0 0	2 5	2 0	HH 4 8 2 1 1 0	4 7	1 4
HB 2 4 0 2 2 0	2 5	2 2	HK 2 2 0 6 8 1	7	
HB 2 4 0 2 4 0	2 5	2 4	HM 3 1 0 2 1 0	3 3	1 9
HB 2 4 0 3 0 0	2 5	1 3	HM 3 1 0 2 5 0	3 3	2
HB 3 1 0 0 8 0	3 3	1 1	HM 3 1 0 4 1 0	3 3	2 2
HB 3 2 0 0 3 0	1 1	1	HM 3 2 0 2 1 0	3 3	1 9
HB 3 2 0 0 5 0	1 1		HM 3 3 0 0 2 0	5 1	5
HB 3 3 0 0 1 0	3 5	1 2	HM 3 3 0 0 3 0	5 1	6
HB 3 3 0 0 2 0	3 5	5	HM 3 3 0 0 5 0	3 7	3 8
HB 3 3 0 0 4 0	3 7	5	HM 3 3 0 0 6 0	3 7	2 0
HB 3 3 0 0 6 0	3 7	1 6	HP 1 4 0 1 1 1	3	7
HB 3 3 0 0 7 0	3 7	2	HP 1 4 0 1 2 0	3	8
HB 3 3 0 0 8 0	3 7	1 7	HP 1 4 0 8 4 2	3	1 2
HB 3 3 0 0 9 0	3 7	1	HP 1 4 1 4 1 0	3	3
HB 3 3 0 1 0 1	3 7	2 1	HP 2 1 0 3 4 1	7	1 5
HB 3 3 0 1 1 1	3 5	9	HP 2 1 1 0 5 0	7	
HB 3 3 0 1 2 0	3 7	3	HP 2 2 0 6 8 0	7	9
HB 3 3 0 1 3 0	3 5	7	HP 2 2 0 7 0 1	7	1 1
HB 3 3 0 1 5 0	3 5	1 5	HP 2 2 0 7 1 2	7	4
HB 3 3 0 1 7 0	3 5	6	HP 2 2 0 7 2 0	7	1 0
HB 3 3 0 1 9 0	3 5	1 4	HP 2 2 0 2 3 0	7	
HB 3 3 0 2 0 0	3 5	1 3	HP 2 3 1 3 7 0	1 9	2 6
HB 3 3 0 2 1 1	3 5	1 1	HP 2 4 1 4 3 0	5 1	3
HB 3 3 0 2 2 1	3 5	1 0	HP 2 5 0 7 6 3	7	1
HB 7 1 0 0 2 0	5 3	8	HP 2 5 0 7 6 5	9	2 5
HB 7 1 0 0 7 0	5 3	9	HP 2 7 1 7 0 0	3 1	2 0
HB 7 9 0 0 3 0	2 5	3 8	HP 2 7 2 0 0 2	9	1 6
HH 2 2 0 5 7 0	7	1 3	HP 2 7 2 5 5 0	9	1
HH 3 3 0 6 7 0	3 7	2 5	HP 2 7 2 5 6 0	9	2
HH 3 3 0 7 6 0	3 1	2 3	HP 2 7 2 5 7 0	9	8

From the library of: Diamond Needle Corp

I N D E X

L I S T No.	PAGE	I T E M No.	L I S T No.	PAGE	I T E M No.
HP 3 2 1 0 8 2	7	1 6	HT 2 3 0 0 3 0	1 5	8
HP 3 2 1 0 9 0	7	1 7	HT 2 3 0 0 4 1	1 7	2 9
HP 3 2 1 0 9 0	3 3	2 4	HT 2 3 0 0 6 2	1 7	1 7
HP 3 2 1 1 1 0	3	1	HT 2 3 0 0 7 0	1 5	9
HP 3 2 1 1 4 0	3 3	3	HT 2 3 0 0 8 0	1 5	1 1
HP 3 2 1 7 1 0	1 1	7	HT 2 3 0 0 9 0	1 3	2
HP 3 2 1 7 2 0	1 1	8	HT 2 3 0 1 0 0	1 3	3
HP 3 3 1 5 6 0	3 7	1 3	HT 2 3 0 1 1 1	1 7	3 2
HP 3 3 1 6 1 0	3 7	1 2	HT 2 3 0 1 2 0	1 7	1 0
HP 3 3 1 6 6 0	3 7	8	HT 2 3 0 1 3 0	1 7	2
HP 3 3 1 7 0 0	3 7	2 3	HT 2 3 0 1 4 1	1 7	8
HP 3 3 1 9 2 2	1 1	1 0	HT 2 3 0 1 4 2	1 5	8
HP 3 3 1 9 5 0	3 7	2 4	HT 2 3 0 1 5 1	1 7	2 8
HP 4 5 1 0 8 0	4 5	5	HT 2 3 0 1 7 0	1 5	1 0
HP 4 5 1 1 0 0	4 7	3	HT 2 3 0 1 8 0	1 7	2 2
HP 4 5 1 1 1 0 6 0	4 5	9	HT 2 3 0 2 0 0	1 9	1 3
HP 4 5 1 1 2 G 3 0 0	4 7	1 7	HT 2 3 0 2 1 0	1 3	3 1
HP 4 6 0 1 6 0	4 1	4	HT 2 3 0 2 2 0	2 3	7
HP 4 6 0 1 6 0	4 9	2	HT 2 3 0 2 5 1	1 7	7
HP 4 6 0 1 7 0	4 1	2	HT 2 3 0 2 6 2	1 7	3 4
HP 4 6 0 1 7 0	4 9	4	HT 2 3 0 2 7 0	1 5	1 5
HP 4 8 0 0 1 0	4 3	7	HT 2 3 0 2 8 0	1 9	2 0
HP 4 8 2 1 7 G 3 0 0	4 7	1 1	HT 2 3 0 2 9 0	1 9	1 5
HP 4 8 2 2 5 0	4 1	1	HT 2 3 0 3 0 0	1 5	6
HP 4 8 2 2 6 0	4 1	8	HT 2 3 0 3 2 0	1 9	2
HP 4 8 2 2 7 0	4 1	6	HT 2 3 0 3 3 0	1 7	3 0
HP 4 8 2 2 8 0	4 1	9	HT 2 3 0 3 4 0	1 9	3
HP 4 8 3 2 9 0	4 9	6	HT 2 3 0 3 6 1	2 9	2 3
HP 4 8 2 5 6 0	4 9	7	HT 2 3 0 3 7 0	1 9	4
HP 4 8 2 5 7 0	4 9	8	HT 2 3 0 3 8 0	2 1	4
HP 4 8 2 5 8 0	4 9	5	HT 2 3 0 4 1 0	2 1	1 3
HP 4 8 2 5 9 0	4 1	7	HT 2 3 0 4 2 0	2 1	5
HP 4 8 2 8 7 1	4 3	1	HT 2 3 0 4 5 0	1 9	6
HP 4 8 2 8 9 2	4 7	5	HT 2 3 0 4 6 0	1 9	7
HP 4 8 2 9 4 0	4 3	6	HT 2 3 0 4 7 0	1 9	1 4
HP 4 8 2 9 4 0	4 7	8	HT 2 3 0 4 8 0	1 9	8
HP 4 8 2 9 5 0	4 3	2	HT 2 3 0 4 9 0	1 9	1
HP 4 8 2 9 5 0	4 7	6	HT 2 3 0 5 0 0	1 9	5
HP 4 8 2 9 8 0	4 7	1 3	HT 2 3 0 5 1 0	1 9	1 2
HP 4 8 3 1 1 1	4 7	1	HT 2 3 0 5 2 0	1 9	1 6
HP 4 8 3 3 7 0	4 7	2	HT 2 3 0 5 3 0	1 9	1 9
HP 4 8 3 3 9 1	4 1	1 0	HT 2 3 0 5 4 0	1 5	7
HP 7 1 0 7 9 1	5 3	6	HT 2 3 0 5 5 0	1 7	2 1
HT 2 3 0 0 1 0	1 3	1	HT 2 3 0 5 6 0	1 9	2 1
HT 2 3 0 0 2 0	1 5	3	HT 2 3 0 5 7 0	1 7	1 4

I N D E X

L I S T No.	PAGE	ITEM No.	L I S T No.	PAGE	ITEM No.
HT 2 3 0 5 8 0	1 3	1 7	HT 2 4 0 4 7 0	2 5	2 6
HT 2 3 0 5 9 0	2 1	1 5	HT 2 4 0 5 2 0	2 5	1 4
HT 2 3 0 6 0 0	2 1	3	HT 2 7 0 0 0 1	2 9	2
HT 2 3 0 6 1 0	2 1	1	HT 2 7 0 0 1 0	2 9	2 2
HT 2 3 0 6 2 0	2 3	8	HT 2 7 0 0 2 1	2 9	5
HT 2 3 0 6 3 0	2 3	6	HT 2 7 0 0 3 0	2 9	1
HT 2 3 0 6 6 0	1 3	1 8	HT 2 7 0 0 4 0	2 9	4
HT 2 3 0 6 7 0	1 7	1 1	HT 2 7 0 0 6 2	2 9	2 5
HT 2 3 0 6 9 0	1 7	1 5	HT 2 7 0 0 7 0	2 7	3
HT 2 3 0 7 2 0	2 1	2	HT 2 7 0 0 8 0	2 9	1 1
HT 2 3 0 7 3 0	1 9	1 8	HT 2 7 0 0 9 0	2 9	1 4
HT 2 3 0 7 5 0	1 9	2 3	HT 2 7 0 1 0 0	2 9	1 0
HT 2 3 0 7 6 0	1 9	9	HT 2 7 0 1 1 0	2 7	1 4
HT 2 3 0 7 7 0	1 9	2 2	HT 2 7 0 1 2 0	2 9	9
HT 2 3 0 8 1 0	1 7	6	HT 2 7 0 1 6 0	9	1 8
HT 2 3 9 8 2 0	1 7	1	HT 2 7 0 1 8 0	9	2 1
HT 2 3 0 8 3 0	2 9	3 5	HT 2 7 0 3 5 0	2 9	2 4
HT 2 4 0 0 0 0	1 5	1	HT 2 7 0 6 4 0	2 9	2 0
HT 2 4 0 0 1 0	1 5	1 4	HT 3 3 0 0 0 1	3 7	4
HT 2 4 0 0 2 0	2 5	9	HT 7 1 0 0 0 0	5 3	5
HT 2 4 0 0 6 1	2 5	1 0	HT 7 9 0 0 0 0	3 3	2 6
HT 2 4 0 1 0 0	5 5	1	HU 3 1 5 2 9 0	3 3	1 6
HT 2 4 0 1 2 0	2 5	1	HV 2 4 0 0 0 0	2 5	3 9
HT 2 4 0 1 3 0	2 5	2	HV 3 3 0 0 1 0	5 1	1 9
HT 2 4 0 1 4 0	2 5	3	HV 3 3 0 0 2 0	5 1	1 8
HT 2 4 0 1 5 0	2 5	4	HV 4 8 0 0 3 0	4 3	1 5
HT 2 4 0 1 6 0	2 5	5	HV 4 8 0 0 3 0	4 7	2 6
HT 2 4 0 1 7 0	2 5	6	HV 4 8 0 0 4 0	4 3	1 7
HT 2 4 0 1 8 0	2 5	7	HV 4 8 0 0 4 0	4 7	2 4
HT 2 4 0 2 1 1	2 5	1 5	HV 4 8 0 0 5 0	4 3	1 1
HT 2 4 0 2 2 0	2 5	1 6	HX 1 2 0 0 0 0	3	2
HT 2 4 0 2 3 0	2 5	1 7	HX 1 2 0 0 1 0	3	1 1
HT 2 4 0 2 4 0	2 5	1 9	HX 1 2 0 0 2 0	3	4
HT 2 4 0 2 5 0	5 5	2	HX 1 3 0 0 0 0	5	4
HT 2 4 0 2 7 0	5 5	3	HX 1 3 0 0 1 0	5	6
HT 2 4 0 2 8 0	5 5	4	HX 1 3 0 0 2 0	5	1
HT 2 4 0 2 9 0	5 5	5	HX 1 3 0 0 3 0	5	2
HT 2 4 0 3 0 0	5 5	6	HX 1 3 0 0 4 0	5	3
HT 2 4 0 3 1 0	5 5	7	HX 1 3 0 0 5 0	5	5
HT 2 4 0 3 3 1	2 5	1 8	HX 1 6 0 0 1 0	3	5
HT 2 4 0 3 4 0	5 5	9	HX 1 6 0 0 2 0	3	1 4
HT 2 4 0 3 9 0	2 5	1 1	HX 1 6 0 0 3 0	3	9
HT 2 4 0 4 3 0	2 5	2 3	HX 1 6 0 0 4 0	3	6
HT 2 4 0 4 4 0	2 5	2 5	HX 1 6 0 0 5 0	3	1 5
HT 2 4 0 4 6 0	2 5	2 1	HX 1 6 0 0 6 0	3	1 0

From the library of: Diamond Needle Corp

I N D E X

L I S T No.	PAGE	ITEM No.	L I S T No.	PAGE	ITEM No.
H X 1 6 0 0 7 0	3	1 7	K F 2 2 0 5 1 1	7	1 4
H X 1 6 0 0 7 0	4 9	1 3	K F 2 2 0 5 1 1	9	1 5
H X 1 6 0 0 8 0	3	1 8	K F 2 2 0 7 8 0	7	8
H X 1 6 0 0 9 0	3	2 1	K F 2 3 0 2 4 0	1 7	1 3
H X 1 6 0 1 0 0	3	2 4	K F 2 3 0 2 5 0	1 7	1 2
H X 3 1 0 0 0 0	3 3	1 8	K F 2 3 0 5 0 0	1 3	6
H X 3 1 0 0 1 0	3 3	1 4	K F 2 3 0 5 3 0	1 9	2 5
H X 3 1 0 0 2 0	3 3	1 5	K F 2 3 0 5 8 0	2 9	3
H X 3 1 0 0 3 0	3 3	6	K F 2 3 0 6 3 0	3 7	1 9
H X 3 1 0 0 4 0	3 3	1	K F 2 3 0 6 4 0	9	1 4
H X 3 1 0 0 5 0	3 3	5	K F 2 3 0 6 4 0	1 7	4
H X 3 1 0 0 6 0	3 3	8	K F 2 3 0 6 6 1	1 7	2 6
H X 3 1 0 0 7 0	3 3	2 7	K F 2 3 0 6 7 0	1 7	2 7
H X 3 1 0 0 8 0	3 3	1 0	K F 2 3 0 9 1 0	1 7	9
H X 3 1 0 0 9 0	3 3	4	K F 2 4 0 9 0 0	5 3	2
H X 3 1 0 1 0 0	3 3	7	K F 2 5 0 9 0 0	7	2
H X 3 1 0 1 1 0	3 3	2 0	K F 3 3 0 1 8 0	1 7	2 3
H X 3 1 0 1 2 0	3 3	2 1	K F 5 3 0 1 1 1	5 1	1 2
H X 3 1 0 1 3 0	3 3	2 5	K F 5 3 0 1 2 0	5 1	8
H X 4 8 0 0 4 0	3 9	4	K F 5 3 0 1 5 0	5 1	7
H X 4 8 0 0 5 0	4 1	1 1	K F 5 3 0 1 6 0	5 1	1 1
H X 4 8 0 4 0 0	3 9	1	K F 7 1 0 3 9 0	5 1	4
H X 4 8 1 0 1 0	3 9	5	K F 7 9 0 1 1 0	3	2 2
H X 5 1 0 0 0 0	5 3	7	K F 7 9 0 2 3 0	3 3	9
H X 7 1 0 0 0 0	5 3	1	K K 4 8 0 1 4 0	4 7	9
K C 2 7 0 1 0 1	2 9	1 8	K L 2 2 0 1 4 0	7	1 2
K C 2 7 0 2 7 1	2 9	6	K L 2 3 0 1 8 0	1 7	2 5
K C 2 7 0 2 9 2	2 9	7	K L 2 7 0 0 0 0	2 9	8
K C 2 7 0 9 7 0	9	3	K L 2 7 0 0 4 0	2 9	1 3
K C 2 7 0 9 8 0	9	2 4	K L 2 7 0 0 6 0	2 9	1 5
K C 2 7 1 4 4 0	3 1	2	K L 2 7 0 0 7 0	2 9	1 7
K C 3 3 0 1 7 0	3 5	3	K L 2 7 0 0 8 1	2 7	2
K C 3 3 0 1 8 0	3 1	3	K L 2 7 0 0 9 1	2 7	1 1
K C 3 3 0 2 8 0	3 5	2	K L 2 7 0 1 0 1	2 7	5
K C 3 3 0 3 1 0 3 0 0	3 7	6	K L 2 7 0 1 1 0	2 7	8
K C 3 3 0 4 1 0	1 7	5	K L 2 7 0 1 2 0	2 7	7
K C 3 3 0 4 1 0	3 1	2 5	K L 2 7 0 1 3 0	2 7	6
K C 3 3 0 4 1 0	3 7	9	K L 2 7 0 2 6 0	2 7	9
K C 3 3 0 4 2 0	3 7	1 1	K L 2 7 0 4 4 0	2 7	1 3
K C 5 3 0 2 3 0	5 1	9	K L 2 7 0 4 5 0	2 7	1 2
K C 5 3 0 2 4 0	5 1	1 0	K L 2 7 0 5 2 0	2 9	1 6
K F 2 2 0 3 0 2	7		K N 2 7 0 9 5 2	9	7
K F 2 2 0 4 1 0	7	7	K N 2 7 0 9 6 1	9	2 3
K F 2 2 0 4 2 1	7		K N 2 7 1 5 2 1	9	1
K F 2 2 0 4 4 0	7	6	K N 2 7 1 5 6 0	9	4

From the library of: Diamond Needle Corp

I N D E X

L I S T No.	PAGE	ITEM No.	L I S T No.	PAGE	ITEM No.
KN 2 7 1 6 2 0	9	8	WC 3 2 0 2 3 0	4 5	2
KN 2 7 1 6 3 0	9	1 0	WC 3 2 0 2 3 0	4 9	1 2
KN 2 7 1 6 4 5	9	1 1			
KN 2 7 1 7 1 2	3 1	8			
KN 2 7 1 7 2 0	3 1	2 4			
KN 2 7 1 7 3 2	3 1	1 5			
KN 2 7 1 7 5 0	3 1	1 1			
KN 2 7 1 7 8 1	3 1	1 0			
KN 2 7 1 8 0 0	3 1	2 9			
KN 2 7 1 9 8 0	9	2			
KN 2 7 1 9 9 0	3 1	9			
KN 2 7 2 3 5 0	3 1	1 2			
KN 2 7 2 4 0 0	7	1 2			
KN 2 7 2 4 0 0	2 7	4			
KN 2 7 2 4 0 0	9	1 2			
KN 2 7 2 4 0 0	2 9	2 1			
KN 2 7 2 5 4 0	9	1 9			
KN 3 1 5 1 1 0	3 3	1 7			
KN 4 5 0 3 0 0	4 5	1 3			
KN 4 5 0 3 3 0	4 7	2 1			
KN 4 8 0 0 6 1	4 3	8			
KN 4 8 0 0 6 1	4 7	1 0			
KN 5 1 1 0 2 0	1 1	9			
KN 5 4 0 5 1 0	5 5	8			
KU 4 6 0 2 7 0	4 5	1 0			
KU 4 6 0 2 7 0	4 7	1 8			
MT 4 6 0 2 4 0	4 5	1 1			
MT 4 6 0 2 4 0	4 7	1 9			
MT 7 9 0 3 1 0	3	2 3			
RA 3 3 0 0 0 1	5 1	3			
RA 3 3 0 0 1 1	5 1	2 0			
RA 3 3 0 0 2 1	5 1	4			
RA 4 8 0 4 3 0	4 5	3			
RA 4 8 0 4 3 0	4 9	1 0			
RB 1 6 0 0 0 0	3	1 9			
RB 4 8 0 0 0 1	4 5	7			
RB 4 8 0 0 1 0	4 5	1			
RB 4 8 0 0 2 0	4 5	2 5			
RB 4 8 0 0 3 0	4 5	2 6			
RB 4 8 0 0 5 1	4 9	1 1			
RB 4 8 0 0 5 1	4 5	4			
RB 4 8 0 0 6 0	4 9	9			
RB 4 8 0 0 7 0	4 7	2 8			
SV - 4 2 7 2	5 1	2			
SV - 4 2 7 8 - 3 - 1 - 1	5 1	1			